

Significance of Salivary Gland Radioiodine Retention on Post-ablation ^{131}I Scintigraphy as a Predictor of Salivary Gland Dysfunction in Patients with Differentiated Thyroid Carcinoma

Kyung Sook Jo · Young-Sil An · Su Jin Lee · Euy-Young Soh · Jeonghun Lee · Yoon-Sok Chung · Dae Jung Kim · Seok-Ho Yoon · Dong Hyun Lee · Joon-Kee Yoon

Received: 14 January 2014 / Revised: 23 March 2014 / Accepted: 26 March 2014 / Published online: 24 April 2014
© Korean Society of Nuclear Medicine 2014

Abstract

Purpose We investigated whether ^{131}I whole-body scintigraphy could predict functional changes in salivary glands after radioiodine therapy.

Methods We evaluated 90 patients who received initial high-dose (≥ 3.7 GBq) radioiodine therapy after total thyroidectomy. All patients underwent diagnostic (DWS) and post-ablation (TWS) ^{131}I whole-body scintigraphy. Visual assessment of salivary radioiodine retention on DWS and TWS was used to divide the patients into two types of groups: a DWS+ or DWS- group and a TWS+ or TWS- group. Salivary gland scintigraphy was also performed before DWS and at the first follow-up visit. Peak uptake and %washout were calculated in ROIs of each gland. Functional changes (Δ uptake or Δ washout) of salivary glands after radioiodine therapy were compared between the two groups.

Results Both peak uptake and the %washout of the parotid glands were significantly lower after radioiodine therapy (all p values < 0.001), whereas only the %washout were significantly reduced in the submandibular glands (all p values < 0.05). For the

parotid glands, the TWS+ group showed larger Δ uptake and Δ washout after radioiodine therapy than did the TWS- group (all p values < 0.01). In contrast, the Δ uptake and Δ washout of the submandibular glands did not significantly differ between the TWS+ and TWS- groups (all p values > 0.05). Likewise, no differences in Δ uptake or Δ washout were apparent between the DWS+ and DWS- groups in either the parotid or submandibular glands (all p values > 0.05).

Conclusion Salivary gland radioiodine retention on post-ablation ^{131}I scintigraphy is a good predictor of functional impairment of the parotid glands after high-dose radioiodine therapy.

Keywords Radioiodine therapy · Salivary gland dysfunction · Differentiated thyroid cancer · ^{131}I scintigraphy · Salivary gland scintigraphy

Introduction

The management of patients with well-differentiated thyroid carcinomas includes surgical removal of all tumor tissue followed by radioactive iodine ^{131}I therapy. Postoperative ^{131}I therapy is used to destroy remnant thyroid tissue as well as microscopic metastases, and it affords the benefits of significant reductions in recurrence and cancer mortality rates in patients with papillary or follicular thyroid cancer [1, 2]. It has also been reported that ^{131}I therapy improved the 5-year recurrence-free survival rates even of patients with papillary microcarcinoma [3]. Furthermore, administration of a therapeutic dose of ^{131}I enables visualization of persistent tumor tissue, via highly sensitive whole-body scanning, in patients with elevated levels of serum thyroglobulin [4].

K. S. Jo · Y.-S. An · S. J. Lee · S.-H. Yoon · D. H. Lee · J.-K. Yoon (✉)

Department of Nuclear Medicine & Molecular Imaging, Ajou University School of Medicine, 164, World Cup-ro, Yeongtong-gu, Suwon, Kyunggi-do, Republic of Korea 443-380
e-mail: jkyoon3@ajou.ac.kr

E.-Y. Soh · J. Lee
Department of Surgery, Ajou University School of Medicine, 164, World Cup-ro, Yeongtong-gu, Suwon, Kyunggi-do, Republic of Korea 443-380

Y.-S. Chung · D. J. Kim
Department of Endocrinology and Metabolism, Ajou University School of Medicine, 164, World Cup-ro, Yeongtong-gu, Suwon, Kyunggi-do, Republic of Korea 443-380

However, although high-dose ^{131}I therapy prolongs survival, some side effects are apparent. Alexander et al. reported that ~77 % of patients reported intermediate or long-term complaints including sialadenitis, transient loss of taste or smell, transient alopecia, chronic/recurrent conjunctivitis, increased frequency of influenza infection and hematologic abnormalities [5]. Apart from these side effects, high-dose ^{131}I therapy can impair dental health by increasing the risk of caries and the need for tooth extractions [6]. Of the problems listed above, sialadenitis is the most frequent complication, associated with radiation damage caused during the transport of radioiodine into the salivary glands, which have an iodide uptake mechanism similar to that of the thyroid and concentrate iodine to levels 20–100-fold that in serum. The frequency of intermediate sialadenitis was initially ~33 % and reached 43 % 1 year after treatment [5, 7–9]. The frequency of radiation-induced sialadenitis is dose-dependent, being proportional to the cumulative ^{131}I dose administered [10–13]. However, in more than half of all cases, reduced salivary gland function was not obviously associated with clinically evident xerostomia or post-therapeutic sialadenitis [5]. Therefore, predicting the occurrence of salivary gland dysfunction is of great importance in the management of patients with differentiated thyroid cancer.

Salivary gland scintigraphy using $^{99\text{m}}\text{Tc}$ -pertechnetate can assess functional damage to the glands following radioiodine therapy [14, 15]. Intravenously administered $^{99\text{m}}\text{Tc}$ -pertechnetate gradually accumulates in the salivary glands over 20 min post-administration and is then excreted as saliva production is enhanced. This type of scintigraphy yields semiquantitative data on uptake ratios and %excretion values [16–18]. However, no reliable method has yet been developed to predict functional impairment of salivary glands at the time of ^{131}I ablation therapy.

Diagnostic ^{131}I whole-body scintigraphy (DWS) can be used to acquire information on the presence of iodine-avid remnant thyroid tissue and also to detect locoregional or distant metastases [19]. Post-ablation ^{131}I whole-body scintigraphy (TWS) is also useful in this context, particularly in patients with elevated serum thyroglobulin levels, because TWS is more sensitive than DWS when used to detect metastatic disease [4, 20]. Our clinical experience has taught us that some patients exhibit ^{131}I retention in the salivary glands on either DWS or TWS. We conducted the present study to explore whether salivary retention evident on whole-body scintigraphy at the time of ^{131}I ablation could predict functional impairment of the salivary glands in patients with papillary thyroid cancer.

Materials and Methods

Subjects

Study subjects were recruited by review of medical records from June 2010 to October 2011. During this period, a total of

229 patients were referred for ^{131}I ablation therapy to treat differentiated thyroid cancer. Of these patients, those who met the following criteria were selected: (1) the first course of radioiodine therapy was given after total thyroidectomy; (2) treatment featured high-dose ^{131}I therapy (≥ 3.7 GBq); (3) both DWS and TWS were performed; (4) salivary gland scintigraphy was performed both before and after radioiodine therapy. We limited our subjects using criterion (1) above because some patients already had salivary gland dysfunctions, caused by previous therapy, at the time when the second course of radioiodine therapy was given, or thereafter. Eighteen patients who had undergone low-dose (1.1 GBq) ^{131}I therapy were also excluded from the study because radiation-induced sialadenitis rarely occurs in such patients. Furthermore, DWS was frequently not performed on such patients. Another four patients excluded from the study had undergone high-dose radiotherapy (5.5 or 7.4 GBq) without performance of DWS. Initially, they were scheduled for low-dose radioiodine therapy, but the doses were raised because of elevations in serum thyroglobulin concentrations.

Information on patients' characteristics, including symptoms of salivary dysfunction and the details of radioiodine ablation therapy, was collected retrospectively via medical record review. Pain and/or swelling in a salivary gland and a dry mouth were considered to be symptoms of salivary dysfunction [10].

Radioiodine Treatment Protocol

The radioiodine ablation protocol is shown in Fig. 1. Four weeks before administering ^{131}I , patients were requested to stop taking levothyroxine (T4) and to switch to tri-

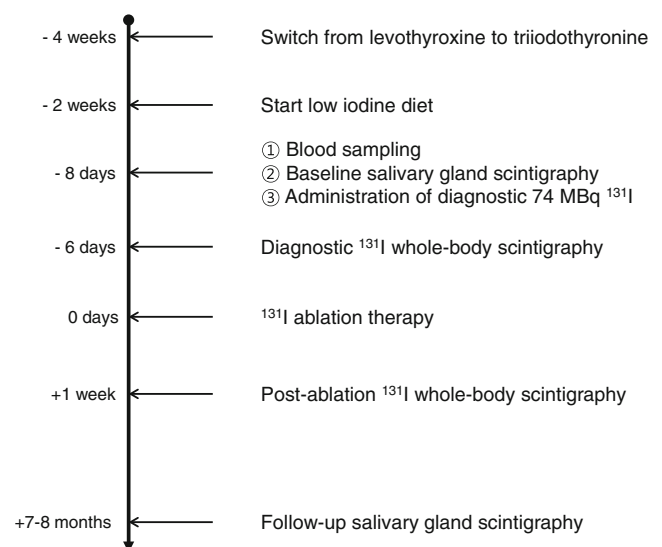


Fig. 1 Flow diagram showing the process of radioiodine therapy

iodothyronine (T3). Any form of thyroid hormone supplementation was prohibited from 2 weeks prior to radioiodine therapy, and, at the same time, patients were instructed to start taking a low-iodine diet. Eight days before radioiodine therapy, blood was withdrawn for measurement of thyroid-stimulating hormone and thyroglobulin levels, and, on the same day, baseline salivary gland scintigraphy was performed. DWS was acquired 2 days after administration of 74 MBq ^{131}I . ^{131}I ablation therapy was performed on the first day of hospitalization, and patients were encouraged to drink 2 l of water daily and to take sialogogues containing vitamin C. TWS was obtained 1 week after radioiodine therapy. All patients underwent post-treatment salivary gland scintigraphy at their first follow-up visits after discharge.

Acquisition and Image Analysis of Salivary Gland Scintigraphy

Salivary gland scintigraphies were acquired using dual-head γ -cameras (Infinia Hawkeye 4, GE Healthcare, Milwaukee, WI; or Varicam, Elscint, Haifa, Israel) equipped with low-energy high-resolution collimators. In the supine position, each patient received an intravenous injection of 185 MBq of $^{99\text{m}}\text{Tc}$ -pertechnetate, and static anterior and lateral images (from both sides) of the head-and-neck region were acquired 5, 10, 15, and 20 min later. Immediately after acquisition of the 20-min images, 200 ml of orange juice was given orally to stimulate saliva production, and 40-min images were later acquired. Each image was stored in a 128×128 matrix for 1 min. For quantitative analysis, polygonal regions of interest (ROIs) were drawn over the parotid and submandibular glands visible on anterior images (Fig. 2). On the same images, a circular ROI was placed over the skull to allow background correction. $^{99\text{m}}\text{Tc}$ -pertechnetate uptake was calculated as the ratios of the average radioactivity of the salivary gland to that of the background. Peak uptake was defined as the highest such value noted on the 5-to-20-min images. Percentage washout of salivary glands was calculated as the proportions of cleared radioactivity (peak radioactivity minus the radioactivity at 40 min) divided by peak radioactivity. The lateral difference was assessed by comparing peak uptake and %washout between right and left parotid glands and between right and left submandibular glands. To evaluate the effect of radioiodine ablation on salivary gland function, peak uptake and %washout of each gland were compared between baseline and follow-up scintigraphies. Functional changes in salivary glands after radioiodine therapy were quantitated as Δpeak or $\Delta\text{washout}$:

$\Delta\text{peak} = \text{peak uptake upon follow-up salivary gland scintigraphy minus peak uptake upon baseline salivary gland scintigraphy.}$

$\Delta\text{washout} = \%\text{washout upon follow-up salivary gland scintigraphy minus \%washout upon baseline salivary gland scintigraphy.}$

Acquisition and Image Analysis of ^{131}I Whole-Body Scintigraphy

Whole-body scintigraphies were acquired using dual-head γ -cameras (Infinia Hawkeye 4, GE Healthcare, Milwaukee, WI, or Varicam, Elscint, Haifa, Israel) equipped with medium-energy collimators (peak, 364 keV; window, 15 %). Both anterior and posterior planar images, from the vertex to the knee, were obtained and stored in $256 \times 1,024$ matrices using a scan speed of 9 cm/min. Scintigraphies were retrospectively reviewed by two nuclear medicine physicians (J.K.Y and K.S.C) blinded to patient data, and the presence or absence of radioiodine retention in salivary glands was determined visually by consensus. Radioactivity of the skull was used as background. At first, the frequency of radioiodine retention was compared among the four glands in both DWS and TWS, and it was then compared between parotid and submandibular glands.

Using the scintigraphic data, each gland was classified by radioiodine retention status as either the DWS+ or DWS-group and either the TWS+ or TWS- group. The Δpeak and $\Delta\text{washout}$ of each gland were compared between the two groups to evaluate the significance of radioiodine retention on functional changes to the salivary glands after radioiodine therapy.

Statistical Analysis

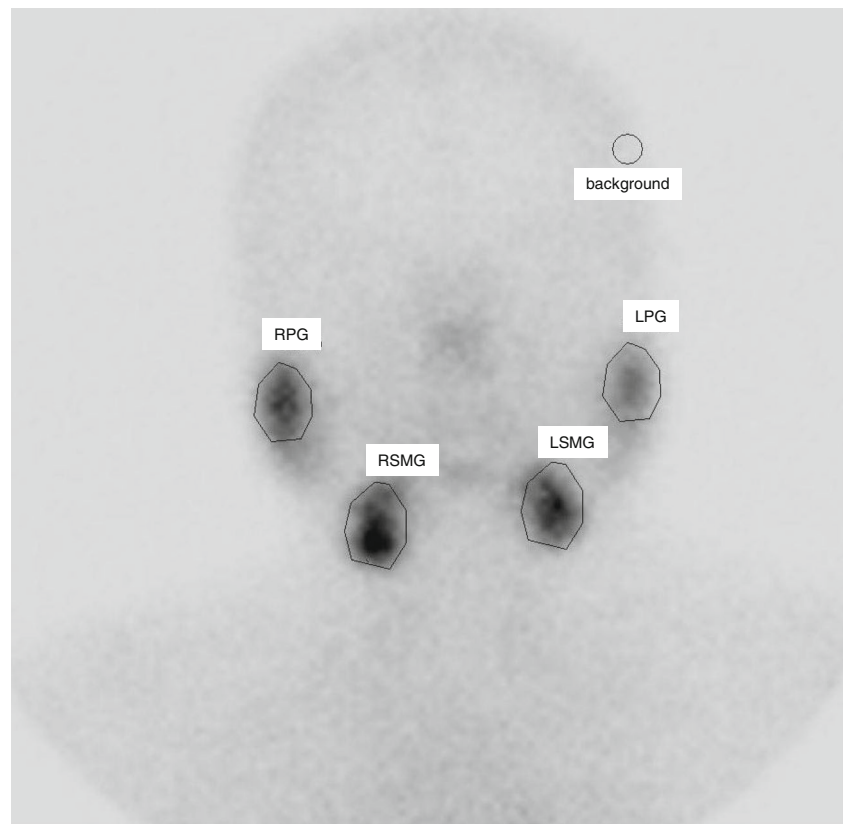
The t-test was used to compare peak uptake, %washout, Δpeak , and $\Delta\text{washout}$ before and after radioiodine therapy, and between the two groups. The chi-squared test was used to compare the frequency of radioiodine retention on DWS and TWS. All statistical analyses were performed using the MedCalc software (version 12.3.0; MedCalc, Mariakerke, Belgium). P values less than 0.05 were considered to reflect significance.

Results

Characteristics of Patients

Our final study population contained 90 patients with papillary thyroid cancer (23 males, 67 females; mean age 48 years; range, 23–70 years). Half ($n=45$) of all patients complained of at least one salivary symptom at the time of follow-up salivary scintigraphy. Most patients (93.3 %, 84/90) received either 3.7 or 5.6 GBq of radioiodine (mean dose 5.0 GBq; range, 3.7–9.3 GBq). The mean interval from baseline to follow-up salivary scintigraphy was 223 days, and the interval for most

Fig. 2 Polygonal region of interests (ROIs) were drawn over bilateral parotid and submandibular glands. A circular ROI was placed over the skull for the correction of background activity



patients (87.8 %, 79/90) was less than 9 months. Table 1 details the characteristics of patients.

Salivary Gland Function

All salivary glands showed ^{99m}Tc -pertechnetate uptake peaks at either 15 or 20 min (data not shown). Table 2 presents data on salivary gland function evaluated by salivary gland scintigraphy before and after ^{131}I ablation therapy. There was no lateral difference in the peak uptake of either the parotid or submandibular glands on either baseline or follow-up salivary gland scintigraphy (all p values >0.05). However, %washout was slightly lower in right-sided than in left-sided glands (for parotid glands: 39.8 ± 17.1 % vs. 42.8 ± 15.6 %, $p=0.0013$; and for submandibular glands: 38.7 ± 13.0 % vs. 40.3 ± 12.1 %, $p=0.0156$). However, after ^{131}I ablation therapy, these differences were no longer apparent (all p values >0.05).

After high-dose ^{131}I ablation therapy, the parotid glands showed significant reductions in both peak uptake ($5.68 \pm 1.69 \rightarrow 4.91 \pm 1.65$, $p<0.0001$) and %washout (41.3 ± 16.4 % $\rightarrow 27.1 \pm 26.8$ %, $p<0.0001$), whereas, for submandibular glands, only %washout was significantly reduced (39.5 ± 12.6 % $\rightarrow 30.9 \pm 26.9$ %, $p=0.0001$). Unlike the parotid glands, the peak uptake of the submandibular glands was not significantly reduced by ^{131}I ablation therapy ($4.01 \pm 1.19 \rightarrow 3.95 \pm 0.98$, $p=0.4827$). Consequently, a larger decrease in peak uptake was observed in

the parotid than in the submandibular glands ($\Delta\text{peak} = -0.77 \pm 1.86$ vs. -0.06 ± 1.22 , $p<0.0001$), while the extent of functional decrease in %washout was similar between the parotid and submandibular glands ($\Delta\text{washout} = -14.1 \pm 32.0$ % vs. -8.6 ± 29.8 %, $p=0.091$).

Table 1 Characteristics of patients

Variables	Values
Total number of patients	90
Male/female	23/67
Age (years)	48 ± 12 (23–70)
Duration (days)	
From baseline to follow-up salivary gland scintigraphy	223 ± 55 (164–421)
From diagnostic ^{131}I whole-body scintigraphy to ^{131}I ablation therapy	6 ± 1 (4–12)
From ^{131}I ablation therapy to post-ablation ^{131}I whole-body scintigraphy	7 ± 1 (2–9)
Symptoms of salivary gland dysfunction (pain, swelling or dry mouth)	50 % (45/90)
Dose of ^{131}I ablation therapy	
Mean	5.0 ± 1.3 (GBq)
3.7/5.6/7.4/9.3 (GBq)	42/51/3/3 %

Mean \pm SD; GBq, gigabecquerel

Table 2 Salivary gland function before and after ^{131}I ablation therapy

	Peak uptake			*P value	%Washout			*P value
	Before	After	Δ peak		Before	After	Δ washout	
RPG	5.64±1.75	4.84±1.72	-0.79±1.89	0.0001	39.8±17.1 %	26.4±29.8 %	-13.3±35.9 %	0.0007
LPG	5.72±1.64	4.98±1.57	-0.75±1.83	0.0002	42.8±15.6 %	27.8±23.5 %	-14.9±27.8 %	<0.0001
Total	5.68±1.69	4.91±1.65	-0.77±1.86	<0.0001	41.3±16.4 %	27.1±26.8 %	-14.1±32.0 %	<0.0001
RSMG	4.01±1.13	3.95±0.97	-0.06±1.24	0.6578	38.7±13.0 %	30.6±28.3 %	-8.1±31.2 %	0.0156
LSMG	4.01±1.25	3.94±0.98	-0.07±1.21	0.5844	40.3±12.1 %	31.2±25.5 %	-9.1±28.4 %	0.0031
Total	4.01±1.19	3.95±0.98	-0.06±1.22	0.4827	39.5±12.6 %	30.9±26.9 %	-8.6±29.8 %	0.0001

Mean ± SD; *p value means statistical significance of the difference in peak uptake or %washout between before and after ^{131}I therapy; RPG, right parotid gland; LPG, left parotid gland; RSMG, right submandibular gland; LSMG, left submandibular gland

Radioiodine Retention on ^{131}I Whole-Body Scintigraphy

Totals of 180 parotid and 180 submandibular glands from 90 patients were examined. DWS revealed radioiodine retention by 28.9 % (52/180) of parotid glands and 28.9 % (52/180) of submandibular glands (Table 3), and no significant differences in the proportions of radioiodine retention were evident among the four glands ($p>0.05$). On TWS, the frequency of radioiodine retention was different among the four glands ($p<0.005$) where it was observed more frequently in submandibular than parotid glands (39.4 % vs. 20.0 %, $p<0.001$). Thus, each gland was identified as DWS+ or DWS- and TWS+ or TWS-.

Relation between Radioiodine Retention and Salivary Gland Function

After classification into the subgroups described above, it was apparent that the peak uptake of the parotid gland was decreased by ^{131}I therapy in both the DWS+ and DWS- groups, but the Δ peak did not significantly differ between the two groups (1.02±2.26 vs. 0.67±1.67, $p=0.3207$, Table 4). Likewise, the falls in %washout of both the parotid and

submandibular glands did not differ between the DWS+ and DWS- subgroups (all p values >0.05). On the other hand, the peak uptake of the submandibular gland changed minimally after ^{131}I therapy, and no significant difference in Δ peak was apparent between the DWS+ and DWS- groups ($p=0.0586$). Therefore, neither peak uptake nor %washout correlated with radioiodine retention, as revealed by DWS, by either the parotid or submandibular glands.

In contrast, after ^{131}I therapy, the fall in peak uptake of the parotid gland was greater in the TWS+ than in the TWS- group (Δ peak = 1.63±2.12 vs. 0.54±1.71, $p=0.0053$, Table 5). Similarly, the %washout of the parotid gland decreased to a greater extent in the TWS+ than the TWS- group (Δ washout = 33.4±44.6 % vs. 9.0±25.5 %, $p=0.0023$). However, as was noted when DWS data were examined, the submandibular gland exhibited a minimal decrease in peak uptake that was not accompanied by any difference in Δ peak (-0.13±1.06 vs. 0.19±1.31, $p=0.0678$). In addition, Δ washout did not differ between the TWS+ and TWS- groups (4.2±20.0 % vs. 11.5±34.5 %, $p=0.0719$). Therefore, radioiodine retention as revealed by TWS was closely related to functional changes in the parotid, but not the submandibular glands.

Table 3 Salivary gland radioiodine retention on diagnostic or post-ablation ^{131}I whole-body scintigraphy

Radioiodine retention	DWS				TWS			
	RPG	LPG	RSMG	LSMG	RPG	LPG	RSMG	LSMG
(+)	25	27	27	25	20	18	35	36
(-)	65	63	63	65	70	72	55	54
*P value	Among the four glands			>0.05				<0.005
	PG vs. SMG			>0.05				<0.001

*P value means statistical significance of the difference in the frequency of radioiodine retention. The frequency of radioiodine retention was compared among the four glands, and it was then compared between the parotid and submandibular glands. DWS, diagnostic ^{131}I whole-body scintigraphy; TWS, post-ablation ^{131}I whole-body scintigraphy; RPG, right parotid gland; LPG, left parotid gland; RSMG, right submandibular gland; LSMG, left submandibular gland; PG, parotid gland; SMG, submandibular gland

Table 4 Relation between the radioiodine retention on diagnostic ^{131}I whole-body scintigraphy and the functional change of salivary gland

		Peak uptake				%Washout				
		N	Before ^{131}I therapy	After ^{131}I therapy	Δpeak	*P value	Before ^{131}I therapy	After ^{131}I therapy	$\Delta\text{washout}$	*P value
PG	DWS+	52	6.05±1.73	5.03±1.87	1.02±2.26	0.3207	45.0±16.3 %	24.7±35.3 %	20.3±42.0 %	0.1693
	DWS-	128	5.53±1.66	4.86±1.55	0.67±1.67		39.7±16.3 %	28.1±22.5 %	11.6±26.7 %	
SMG	DWS+	52	3.56±0.81	3.74±0.75	-0.18±0.99	0.0586	38.4±10.4 %	32.4±18.4 %	6.0±18.8 %	0.3456
	DWS-	128	4.20±1.26	4.03±1.04	0.16±1.29		40.0±13.4 %	30.3±29.7 %	9.7±33.2 %	

Mean ± SD; N, number of gland; *p value means statistical significance of the difference in Δpeak or $\Delta\text{washout}$ between DWS+ and DWS-; Δpeak , net difference in peak uptake between baseline and follow-up salivary scintigraphy; $\Delta\text{washout}$, net difference in %washout between baseline and follow-up salivary scintigraphy; PG, parotid gland; SMG, submandibular gland; DWS+, patients with retention on diagnostic ^{131}I whole-body scintigraphy; DWS-, patients without retention on diagnostic ^{131}I whole-body scintigraphy

Discussion

Sialadenitis is the most prevalent complication in patients who undergo radioiodine therapy to treat differentiated thyroid carcinoma. Most such conditions can be relieved by conservative treatment featuring adequate hydration, salivary flow stimulation, external compression, and medication including NSAIDs, anticholinergics, or steroids. However, in some cases, invasive procedures are required, for example, sialendoscopy or surgical removal of a salivary gland, and permanent damage to the salivary glands results [13, 17, 21]. Salivary glands cause pain and swelling as early as a few days after radioiodine therapy. However, such early symptoms are frequently transient and subside spontaneously; they are thus not reliable predictors of permanent salivary gland dysfunction [8]. In a previous study by Macioszek et al., the acute sialadenitis symptoms developing after radioiodine therapy were not correlated with subsequent salivary gland dysfunction [12]. However, prediction of salivary gland dysfunction is crucial to select patients who require close observation after treatment and to reduce the extent of such dysfunction. In this study, we investigated whether salivary gland radioiodine retention, as revealed by ^{131}I whole-body scintigraphy, could be used to predict functional salivary gland impairment caused by radioiodine therapy.

Our data show that the extent of functional changes in the parotid glands after radioiodine therapy was greater in the TWS+ than in the TWS- group in terms of both peak uptake and %washout. This indicates that parotid gland radioiodine retention on TWS is closely associated with the development of later salivary dysfunction, and such patients therefore require more aggressive management and close observation to protect the salivary glands. In contrast, neither the peak uptake nor %washout of the submandibular glands differed significantly between the TWS+ and TWS- groups. This implies that submandibular gland dysfunction cannot be predicted by radioiodine retention revealed by TWS. A possible explanation for the differences in these results is the fact that the histology of the salivary glands differs. Parotid glands are serous cell-dominant and are affected more by radiation than are mucous cells. However, the submandibular glands are composed of both mucous and serous cells. In addition, the parotid gland transports more radioiodine than does the submandibular gland. Therefore, it is understandable that the parotid gland should be more susceptible to radiation-induced damage than the submandibular gland in patients receiving ^{131}I ablation therapy [8, 15, 22]. Esfahani et al. reported that the decrease in the proportion of saliva secreted by the parotid glands was greater than that from the submandibular glands, as revealed by salivary gland scintigraphy, at

Table 5 Relation between the radioiodine retention on post-ablation ^{131}I whole-body scintigraphy and the functional change of the salivary gland

		Peak uptake				%Washout				
		N	Before ^{131}I therapy	After ^{131}I therapy	Δpeak	*P value	Before ^{131}I therapy	After ^{131}I therapy	$\Delta\text{washout}$	*P value
PG	TWS+	52	6.02±1.83	4.39±1.74	1.63±2.12	0.0053	42.6±17.4 %	9.2±38.0 %	33.4±44.6 %	0.0023
	TWS-	128	5.59±1.65	5.05±1.60	0.54±1.71		40.9±16.2 %	31.9±20.6 %	9.0±25.5 %	
SMG	TWS+	52	3.81±1.16	3.94±0.97	-0.13±1.06	0.0678	36.8±10.6 %	32.6±19.7 %	4.2±20.0 %	0.0719
	TWS-	128	4.14±1.19	3.95±0.99	0.19±1.31		41.3±13.5 %	29.8±30.7 %	11.5±34.5 %	

Mean ± SD; N, number of glands; *p value means statistical significance of the difference in Δpeak or $\Delta\text{washout}$ between TWS+ and TWS-; Δpeak , net difference in peak uptake between baseline and follow-up salivary scintigraphy; $\Delta\text{washout}$, net difference in %washout between baseline and follow-up salivary scintigraphy; PG, parotid gland; SMG, submandibular gland; TWS+, patients with retention on post-ablation ^{131}I whole-body scintigraphy; TWS-, patients without retention on post-ablation ^{131}I whole-body scintigraphy

both 3 weeks and 3 months after radioiodine ablation therapy [23]. Macioszek et al. evaluated salivary gland function by calculating radioiodine uptake ratios, and parotid radiosensitivity was evident [12]. A study of a Korean population by Kim et al. also indicated that the incidence of salivary gland symptoms was higher in parotid (90 %, 19/21) than submandibular glands (10 %, 2/21) [13]. Lee et al. showed that the estimated absorbed doses upon radioiodine therapy were similar for both the parotid and submandibular glands (2.7 ± 0.8 Gy and 2.8 ± 1.1 Gy, respectively) [24]. All of these data are in agreement with our finding that the parotid glands are highly susceptible to radiation damage. As shown in Table 2, the peak uptake of the parotid glands was decreased significantly after ^{131}I ablation therapy, but this was not the case with the submandibular glands. Turning to %washout, both the parotid and submandibular glands exhibited significant reductions in these values after ^{131}I ablation therapy, but the extent of reduction was greater in the parotid than the submandibular glands. Also, these data were collected under conditions in which radioiodine accumulated to higher levels in the submandibular glands (Table 3). Therefore, in the clinic, it is possible to predict functional changes caused by radioiodine therapy only for the parotid gland.

Lee et al. [24] suggested recently that post-ablation ^{131}I whole-body scintigraphy may be used to predict the development of symptomatic sialadenitis after radioiodine ablation. In the cited study, patients with symptomatic sialadenitis exhibited higher levels of ^{131}I uptake by the parotid glands on early (day 3) ^{131}I scintigraphy. Visual and semiquantitative evaluation allowed prediction of the development of sialadenitis after radioiodine ablation, with sensitivities ranging from 80–93 %. In contrast, ^{131}I uptake did not differ significantly in the submandibular gland or upon delayed (day 7) ^{131}I scintigraphy. In some respects, the findings of our present study differ from those of Lee et al. The cited authors monitored the development of symptomatic sialadenitis, but we evaluated salivary gland function using $^{99\text{m}}\text{Tc}$ -pertechnetate salivary gland scintigraphy. In addition, Lee et al. monitored symptoms of sialadenitis (pain/swelling of salivary glands, taste loss, dry mouth, and xerostomia) in both the acute (hospitalization) and chronic (on follow-up visits at intervals of 1–6 months) periods. Hence, the cited study examined both acute and chronic sialadenitis. However, in our present study, we focused on chronic salivary gland dysfunction, because it is known that development of acute sialadenitis is not associated with later salivary gland dysfunction [8]. Finally, the cited authors found that only early scintigraphy could be used to predict the occurrence of sialadenitis. On the contrary, we found that delayed scintigraphy predicted more severe salivary gland dysfunction. However, despite the differences between the two studies, the finding of the cited work, to the effect that post-ablation scintigraphy can be used to predict salivary gland functional impairment, is in line with the results of the present study.

As expected, DWS was ineffective in terms of predicting functional impairment caused by radioiodine therapy (Table 4). After classification of salivary glands into DWS+ and DWS- groups, based on radioiodine retention, the parotid glands showed no significant differences in terms of Δpeak and $\Delta\text{washout}$ between the two groups. The same was true of $\Delta\text{washout}$ of the submandibular glands. Also, no significant decrease was observed in peak uptake of the submandibular glands. To minimize the stunning effect, DWS is performed in our clinic using 74 MBq [^{131}I][25], which is too small a dose to injure the salivary gland. Two case reports on salivary gland ^{131}I uptake, shown by ^{131}I whole-body scintigraphy, in patients with sialadenitis have appeared. Kolla et al. described a 53-year-old patient exhibiting focal ^{131}I uptake on follow-up diagnostic ^{131}I scintigraphy, which mimicked nodal metastasis, but proved to be chronic submandibular sialadenitis after radioiodine therapy [26]. Carlisle et al. also observed bilateral parotid ^{131}I uptake on follow-up diagnostic ^{131}I scintigraphy in a patient with radioiodine therapy-induced chronic parotitis [27]. These reports suggested that ^{131}I uptake revealed by ^{131}I scintigraphy was indicative of the presence of sialadenitis. However, the results of the present study suggest that DWS data cannot be used to predict salivary gland dysfunction caused by ^{131}I ablation therapy.

As shown in Table 3, the pattern of radioiodine retention revealed by DWS was different from that shown on TWS. Although the radioiodine accumulation by the four salivary glands did not differ upon DWS, we found that the submandibular glands accumulated more radioiodine on TWS. However, the reason for this difference in the pattern of radioiodine retention is uncertain. A possible contributing factor is the difference in the radioiodine dose used for scintigraphy. As submandibular glands produce more saliva than parotid glands, it would appear quite reasonable that submandibular glands accumulate more radioiodine on TWS. However, on DWS, most of the administered radioiodine is taken up by remnant thyroids, and very little of that is circulating in the blood. Consequently, the difference in radioiodine concentration between parotid and submandibular glands may not be evident. Even though we used a very low dose of radioiodine for DWS, all images demonstrated the body contour clearly from vertex to mid-thigh. Thus, this difference would not result from the image quality of those scintigraphies.

Table 2 shows the functional status of the parotid and submandibular glands as evaluated by $^{99\text{m}}\text{Tc}$ -pertechnetate salivary gland scintigraphy. Although both peak uptake and %washout of the parotid gland were reduced significantly by radioiodine therapy, only %washout in the submandibular glands was decreased significantly. As mentioned above, the submandibular gland is more resistant than the parotid gland to radiation-induced damage because of histological differences between the two glands [23, 13]. The difference in the

time of onset of damage may also explain our observations. ^{99m}Tc -pertechnetate uptake by the salivary gland, and wash-out thereof, reflect parenchymal and ductal functions, respectively. As radiation causes damage first to the ductal walls, followed by later vascular fibrosis [8], salivary excretion could be impaired earlier, and to a greater extent, than parenchymal uptake, at early time points. Parenchymal impairment would have been more prominent had the patients been followed up over a longer period.

The present study was retrospective in nature, and the time between baseline and follow-up salivary gland scintigraphy varied from 5.5 to 14 months. It is known that the propensity for development of radiation-induced side effects may change with the duration of follow-up [5]. In the current study, most patients (87.8 %) visited our hospital about 7 months (5.5–9 months) after radioiodine ablation; however, some variation in visit time was inevitable. Moreover, we evaluated all patients only once after they received therapy. When it is considered that both the incidence and pattern of salivary gland dysfunction can change even after 1 year of therapy, it is clear that further clinical observations are needed. Another limitation of our study is that the extent of radioiodine retention upon ^{131}I whole-body scintigraphy was assessed visually; we did not explore any possible correlation between the level of radioiodine retention and the extent of functional damage to the salivary glands. As the extent of radioiodine retention was arbitrarily graded from 1 to 3, most cases were assigned to grade 1. Therefore, we simply classified patients into two groups, characterized by the ‘presence’ or ‘absence’ of retention. Finally, our study population was small; thus, the post-ablation status of the salivary glands was assessed semiquantitatively using scintigraphy. However, if the symptoms of sialadenitis are considered, it would be possible to subdivide patients into a normal group, a group with chronic sialadenitis and permanent salivary dysfunction. Therefore, further study using larger populations to allow patient sub-classification and longer-term observations is required in future.

In conclusion, radioiodine retention by the parotid glands upon post-ablation ^{131}I whole-body scintigraphy was associated with reductions in peak uptake and %washout after radioiodine therapy in patients with differentiated thyroid carcinoma. Post-ablation ^{131}I whole-body scintigraphy may be used to predict severe functional impairment of the parotid glands, thus identifying patients requiring close observation and aggressive preventative measures.

Acknowledgement This research was supported by the Basic Science Research Program through the National Research Foundation of Korea (NRF) funded by the Ministry of Education, Science and Technology (NRF-2012R1A1A2043103).

Conflict of Interest Kyung Sook Jo, Young-Sil An, Su Jin Lee, Euy-Young Soh, Jeonghun Lee, Yoon-Sok Chung, Dae Jung Kim, Seok-Ho Yoon, Dong Hyun Lee, and Joon-Kee Yoon declare that they have no conflict of interest.

Ethical Statement All procedures followed were in accordance with the ethical standards of our Institutional Review Board on human experimentation (approval no.: AJIRB-MED-MDB-12-310) and with the Helsinki Declaration of 1975, as revised in 2008. As this is a retrospective study with minimal risk, waiver of informed consent from patients was applied by our Institutional Review Board.

References

- Schlumberger MJ. Papillary and follicular thyroid carcinoma. *N Engl J Med.* 1998;338:297–306.
- Mazzafieri EL, Jhiang SM. Long-term impact of initial surgical and medical therapy on papillary and follicular thyroid cancer. *Am J Med.* 1994;97:418–28.
- Creach KM, Siegel BA, Nussenbaum B, Grigsby PW. Radioactive iodine therapy decreases recurrence in thyroid papillary microcarcinoma. *ISRN Endocrinol.* 2012;2012:816386.
- Lind P. ^{131}I whole body scintigraphy in thyroid cancer patients. *Q J Nucl Med.* 1999;43:188–94.
- Alexander C, Bader JB, Schaefer A, Finke C, Kirsch CM. Intermediate and long-term side effects of high-dose radioiodine therapy for thyroid carcinoma. *J Nucl Med.* 1998;39:1551–4.
- Walter MA, Turtschi CP, Schindler C, Minnig P, Muller-Brand J, Muller B. The dental safety profile of high-dose radioiodine therapy for thyroid cancer: long-term results of a longitudinal cohort study. *J Nucl Med.* 2007;48:1620–5.
- Cavalieri RR. Iodine metabolism and thyroid physiology: current concepts. *Thyroid.* 1997;7:177–81.
- Mandel SJ, Mandel L. Radioactive iodine and the salivary glands. *Thyroid.* 2003;13:265–71.
- Allweiss P, Braunstein GD, Katz A, Waxman A. Sialadenitis following I-131 therapy for thyroid carcinoma: concise communication. *J Nucl Med.* 1984;25:755–8.
- Hyer S, Kong A, Pratt B, Harmer C. Salivary gland toxicity after radioiodine therapy for thyroid cancer. *Clin Oncol (R Coll Radiol).* 2007;19:83–6.
- Spitzweg C, Harrington KJ, Pinke LA, Vile RG, Morris JC. Clinical review 132: The sodium iodide symporter and its potential role in cancer therapy. *J Clin Endocrinol Metab.* 2001;86:3327–35.
- Macioszek A, Baczyk M, Kopec T, Sowinski J. Salivary gland damage after ^{131}I therapy in patients with differentiated thyroid cancer. Preliminary report. *Endokrynol Pol.* 2008;59:403–10.
- Kim JW, Han GS, Lee SH, Lee DY, Kim YM. Sialoendoscopic treatment for radioiodine induced sialadenitis. *Laryngoscope.* 2007;117:133–6.
- Caglar M, Tuncel M, Alpar R. Scintigraphic evaluation of salivary gland dysfunction in patients with thyroid cancer after radioiodine treatment. *Clin Nucl Med.* 2002;27:767–71.
- Malpani BL, Samuel AM, Ray S. Quantification of salivary gland function in thyroid cancer patients treated with radioiodine. *Int J Radiat Oncol Biol Phys.* 1996;35:535–40.
- An YS, Yoon JK, Lee SJ, Song HS, Yoon SH, Jo KS. Symptomatic late-onset sialadenitis after radioiodine therapy in thyroid cancer. *Ann Nucl Med.* 2013;27:386–91.
- Raza H, Khan AU, Hameed A, Khan A. Quantitative evaluation of salivary gland dysfunction after radioiodine therapy using salivary gland scintigraphy. *Nucl Med Commun.* 2006;27:495–9.
- Kang JY, Jang SJ, Lee WW, Jang SJ, Lee YJ, Kim SE. Evaluation of salivary gland dysfunction using salivary gland scintigraphy in Sjögren’s syndrome patients and in thyroid cancer patients after radioactive iodine therapy. *Nucl Med Mol Imaging.* 2011;45:161–8.
- American Thyroid Association Guidelines Taskforce on Thyroid N, Differentiated Thyroid C, Cooper DS, Doherty GM, Haugen BR, Kloos RT, et al. Revised american thyroid association management

- guidelines for patients with thyroid nodules and differentiated thyroid cancer. *Thyroid*. 2009;19:1167–214.
20. Chong A, Song H, Min J, Jeong SY, Ha J, Kim J, et al. Improved detection of lung or bone metastases with an I-131 whole body scan on the 7th Day after high-dose I-131 therapy in patients with thyroid cancer. *Nucl Med Mol Imaging*. 2010;44:273–81.
 21. Prendes MA, Harris A, Wirotko BM, Gerber AL, Siesky B. The role of transforming growth factor beta in glaucoma and the therapeutic implications. *Br J Ophthalmol*. 2013;97:680–6.
 22. Rigler RG, Scanlon PW. Radiation parotitis from radioactive iodine therapy. *Proc Staff Meet Mayo Clin*. 1955;30:149–53.
 23. Esfahani AF, Fallahi B, Olamaie R, Eftekhari M, Beiki D, Saghari M. Semi-quantitative assessment of salivary gland function in patients with differentiated thyroid carcinoma after radioiodine-131 treatment. *Hell J Nucl Med*. 2004;7:206–9.
 24. Lee SM, Lee JW, Kim SY, Han SW, Bae WK. Prediction of risk for symptomatic sialadenitis by post-therapeutic dual (131)I scintigraphy in patients with differentiated thyroid cancer. *Ann Nucl Med*. 2013;27:700–9.
 25. Woolfenden JM. Thyroid stunning revisited. *J Nucl Med*. 2006;47:1403–5.
 26. Kolla IS, Alazraki NP, Watts NB. Sialadenitis mimicking metastatic thyroid carcinoma. *Clin Nucl Med*. 1989;14:564–6.
 27. Carlisle MR, McDougall IR. Dramatic parotid uptake of I-131 on a diagnostic whole-body scan. *Clin Nucl Med*. 2000;25:895–7.