

Original Article  
Otorhinolaryngology



OPEN ACCESS

**Received:** Oct 19, 2022  
**Accepted:** Mar 21, 2023  
**Published online:** Jun 16, 2023

**Address for Correspondence:**

**Jeong Hun Jang, MD, PhD**

Department of Otolaryngology, Ajou University  
School of Medicine, 164 Worldcup-ro,  
Yeongtong-gu, Suwon 16499, Republic of Korea.  
Email: jhj@ajou.ac.kr

© 2023 The Korean Academy of Medical  
Sciences.

This is an Open Access article distributed  
under the terms of the Creative Commons  
Attribution Non-Commercial License ([https://  
creativecommons.org/licenses/by-nc/4.0/](https://creativecommons.org/licenses/by-nc/4.0/))  
which permits unrestricted non-commercial  
use, distribution, and reproduction in any  
medium, provided the original work is properly  
cited.

**ORCID iDs**

Hantai Kim   
<https://orcid.org/0000-0002-5020-7814>  
Jang Gyu Han   
<https://orcid.org/0000-0002-1009-5352>  
Hun Yi Park   
<https://orcid.org/0000-0003-2467-3114>  
Yun-Hoon Choung   
<https://orcid.org/0000-0002-0786-1781>  
Jeong Hun Jang   
<https://orcid.org/0000-0003-1707-5714>

**Funding**

The work was supported by the Korea Medical  
Device Development Fund grant funded by the  
Korea government (the Ministry of Science and  
ICT, the Ministry of Trade, Industry and Energy,  
the Ministry of Health & Welfare, the Ministry  
of Food and Drug Safety) (Project Number:  
KMDF\_PR\_20210527\_0007\_2021\_02).

# Relationship Between Facial Bone Fractures and the Risk of Posttraumatic Complications: A Hypothesis on the Cushion Effect of the Facial Skeletons in Temporal Bone Fractures

Hantai Kim <sup>1</sup>, Jang Gyu Han <sup>2</sup>, Hun Yi Park <sup>2</sup>, Yun-Hoon Choung <sup>2</sup> and Jeong Hun Jang <sup>2</sup>

<sup>1</sup>Department of Otorhinolaryngology-Head and Neck Surgery, Konyang University College of Medicine, Daejeon, Korea

<sup>2</sup>Department of Otolaryngology, Ajou University School of Medicine, Suwon, Korea

## ABSTRACT

**Background:** This study investigated whether concomitant facial bone (FB) fractures reduce temporal bone (TB) injuries, such as posttraumatic facial palsy and vertigo, through an impact absorbing effect, so-called “cushion effect,” in severe trauma patients.

**Methods:** A total of 134 patients with a TB fracture were included. They were divided into two groups according to their concomitant facial fractures: group I (no FB fracture) and group II (FB fracture). We compared clinical characteristics, such as brain injury, trauma severity, and complications of TB fracture, between the two groups.

**Results:** In group II, immediate facial palsy was more frequent (11.6% vs. 1.5% in group I), and the Injury Severity Score was higher ( $19.0 \pm 5.9$  vs.  $16.7 \pm 7.3$ ,  $P = 0.020$ ). Delayed facial palsy (12.3% in group I vs. 4.3% in group II) and posttraumatic vertigo (24.6% vs. 7.2%) occurred more often in group I. FB fractures significantly decreased the incidence of posttraumatic vertigo (odds ratio [OR], 0.276; 95% confidence interval [CI], 0.083–0.914). Intraventricular hemorrhage (OR, 20.958; 95% CI, 2.075–211.677), facial nerve canal injury (OR, 12.229; 95% CI, 2.465–60.670), and FB fractures (OR, 16.420; 95% CI, 1.298–207.738) increased the risk of immediate facial palsy.

**Conclusion:** Concomitant FB fractures reduced the risk of the occurrence of delayed facial palsy and posttraumatic vertigo in injured patients with TB fracture. Particularly, an anterior force may be reduced by the cushion effect of the bony fracture.

**Keywords:** Temporal Bone Fracture; Facial Bone Fracture, Severe Trauma; Cushion Effect; Facial Palsy; Vertigo

## INTRODUCTION

The cranial vault, a bony structure that protects the brain from external force, only provides a barrier to superior and posterior impacts. However, there is an additional barrier against anterior forces: the facial skeleton. Facial bones (FBs) are capable of tolerating the impact

**Disclosure**

The authors have no potential conflicts of interest to disclose.

**Author Contributions**

Conceptualization: Kim H, Jang JH. Data curation: Kim H, Han JG, Park HY, Choung YH, Jang JH. Formal analysis: Kim H. Investigation: Kim H, Jang JH. Methodology: Kim H, Jang JH. Software: Kim H. Validation: Park HY, Choung YH, Jang JH. Visualization: Kim H. Writing - original draft: Kim H. Writing - review & editing: Han JG, Park HY, Choung YH, Jang JH.

of craniofacial injuries, serving as a cushion by absorbing the impact. These fractures act as shock absorbers to dissipate the injury force (the so-called “cushion effect”).<sup>1-3</sup>

Since its introduction by Lee et al. in 1988, there have been several studies on the “cushion effect” of FB fractures.<sup>2</sup> The facial skeleton contains thin and pneumatic cavities and denser bones are located closer to the brain. This structure allows the skeleton to serve as a cushion for absorbing external injury forces.<sup>4,5</sup> A finite element model simulation showed that fractures in FBs can distribute impact forces and redirect stress to the air-filled sinuses.<sup>6</sup> The cushion effect of FB fractures has been studied in relation to brain injuries, but its association with other types of injuries, such as temporal bone (TB) fracture, is not well established.

TB fracture is frequently seen in head trauma patients, with an incidence of around 30%.<sup>7</sup> Proper management of associated complications, such as hearing loss, facial palsy, and posttraumatic vertigo, is crucial.<sup>8-10</sup> In mild cases, a physical examination suffices to detect these complications. However, in severe cases where the patient is unconscious, there may be a delay in identifying and managing the complications, leading to long-term sequelae.

We aimed to find objective indicators to predict complications associated with TB fracture. In this study, we investigated the cushion effect of FB fractures and hypothesize that it may reduce the risk of complications from TB fracture if they occur together. We examined patients with TB fracture and complications such as hearing loss, facial palsy, and posttraumatic vertigo to determine the presence of the cushion effect.

**METHODS****Patients**

We collected medical records of patients referred to the Department of Otolaryngology from the Trauma Center of Ajou University Hospital between January 2016 and December 2018 for suspected TB fracture. Patients who were transferred to other hospitals within a month and those with confirmed absence of TB fracture after a radiological review were excluded. Age was no criterion. Out of 188 subjects, 54 were excluded. Finally, 134 patients were studied with an average age of 47.3 years (ranging from 10 to 81). We retrospectively reviewed their medical records for demographic information and signs of potential complications related to TB fracture.

**Injury severity of trauma**

The Injury Severity Score (ISS) was used to assess the severity of trauma.<sup>11,12</sup> For the calculation of the score, a body of a person injured is divided into the following six parts: head and neck, face, chest, abdomen or pelvic contents, extremities or pelvic girdle, and other external injuries. Then each part is given a rating based on its severity—no injury (0 point), minor (1), moderate (2), serious (3), severe (4), critical (5), and untreatable (6). The ISS is the sum of the squared numbers of three highest values. For example, if a patient suffered moderate (2) injury on head and neck region, serious (3) on face, severe (4) on abdomen or pelvic contents, and minor (1) external injuries, the ISS of the patient is calculated as 29 ( $4^2 + 3^2 + 2^2$ ; only three highest regions are calculated). There is one exception in the calculation system; if a score is 6 in any parts, the score is regarded as 75. The ISS ranges from 1 to 75; generally, major trauma is defined as an ISS > 15.<sup>11,12</sup>

### Radiological evaluation

Using temporal bone computed tomography (TBCT), brain CT, and brain magnetic resonance imaging, craniofacial skeleton fractures, facial nerve canal injuries, and brain damage were evaluated by neuroradiologists. FB fractures were classified into maxillary fractures, mandibular fractures, zygomatic fractures, and orbital wall fractures, based on previous studies.<sup>13,14</sup> This study did not include nasal bone fractures because they are commonly occurring and can result from even minor impacts. Fractures in orbital part of frontal bone were included as orbital wall fractures. Fractures in the forehead area of the frontal bones were not considered, as that area is considered part of the skull, not the facial skeleton. Patients were divided into two groups according to their concomitant FB fractures: group I (without FB fractures, n = 65) and group II (with FB fracture, n = 69).

### Otologic evaluation

If an injured patient exhibited a suspicious TB fracture radiologically, the facial nerve function was evaluated immediately. When the facial movement was asymmetric at the evaluation, we diagnosed it as 'immediate facial palsy.' The movement was symmetric initially, but the palsy developed later; it was regarded as 'delayed facial palsy.' We used the House-Brackmann grading system as the criteria for facial palsy, where cases with a grade of II or higher were considered to have facial palsy.<sup>15,16</sup>

The extent of hearing loss was evaluated using pure tone audiometry. The air conduction (AC) and bone conduction (BC) hearing thresholds were documented for each ear. The average pure-tone thresholds at 500, 1,000, 2,000, and 4,000 Hz were calculated using a weighted method:  $[(500 + 1,000 + 1,000 + 2,000 + 2,000 + 4,000)/6]$ . Hearing loss was diagnosed if the average AC threshold was over 10 dB greater than that of the normal ear. Sensorineural hearing loss (SNHL) was defined as cases where there was no difference in AC and BC levels or where the difference was less than 10 dB. Conductive hearing loss (CHL) was considered as present when ossicular disruption was clearly identified on TBCT or a difference of  $\geq 10$  dB between AC and BC that persisted for at least one month after the trauma.

Posttraumatic vertigo was differentiated using the vestibular function test. Maneuvers for diagnosing benign paroxysmal positional vertigo (BPPV) were performed, including the Dix-Hallpike maneuver and the head-rolling test. Vestibulopathy refers to reduced vestibular function evident on the bithermal caloric test. A canal paresis value  $> 27\%$  was deemed to indicate pathological value.

### Statistical analyses

We used the  $\chi^2$  or Fisher's exact test to analyze the categorical data, and the independent *t*-test to analyze the parametric numerical data. The Mann-Whitney *U* test was employed to analyze non-parametric numerical data. Multivariate logistic regression was used to identify risk factors for complications. All statistical analyses were performed with IBM SPSS Statistics for Windows software (ver. 21.0; IBM Corp., Armonk, NY, USA). A *P* value  $< 0.05$  was considered statistically significant.

### Ethics statement

The present study protocol was reviewed and approved by the Institutional Review Board of Ajou University Hospital (approval No. AJIRM-MED-MDB-19-063). Informed consent was waived because of the retrospective nature of the study.

## RESULTS

### Subject characteristics

Out of the 134 subjects, 110 (82.1%) were male and 24 (17.9%) were female. The study included 28 (20.9%) cases of CHL, 25 (18.7%) cases of SNHL, 20 (14.9%) cases of facial nerve palsy, and 21 (15.7%) cases of vestibulopathies such as BPPV. Concurrently, there were 33 (24.6%) cases of epidural hemorrhage, 44 (32.8%) cases of subarachnoid hemorrhage, 48 (35.8%) cases of subdural hemorrhage, 8 (6.0%) cases of intracerebral hemorrhage, and 7 (5.2%) cases of intraventricular hemorrhage (IVH). The most common type of FB fracture was orbital wall fracture, presented in 46 (34.3%) subjects, followed by zygoma fracture in 35 (26.1%), maxilla fracture in 24 (17.9%), and mandible fracture in 16 (11.9%) (**Table 1**).

### FB fractures and the complications of TB fracture

**Table 2** shows the characteristics of all patients according to the groups. Brain hemorrhage was more frequent in group I (without FB fracture) than group II (with FB fracture) ( $P = 0.023$ ). Immediate facial palsy occurred more frequently in group II, whereas delayed facial palsy occurred more often in group I ( $P = 0.022$ ). The frequency of hearing loss was similar between the two groups regardless of the type of hearing loss. Posttraumatic vertigo was more common in group I than group II ( $P = 0.014$ ) (**Table 2**).

### Influence of FB fractures on TB injuries

Multivariate logistic regression was performed to determine whether the extent of FB fractures would affect the likelihood of facial palsy and posttraumatic vertigo. Both IVH (odds ratio [OR], 20.958; 95% confidence interval [CI], 2.075–211.677) and FB fractures (OR, 16.420; 95% CI, 1.298–207.738) were associated with the increased incidence of immediate

**Table 1.** Subject characteristics

Characteristics	Values
Gender	
Male	110 (82.1)
Female	24 (17.9)
Age, yr	47.3 (range: 10–81)
Injury Severity Score	17.8 ± 6.7
Complications	
Conductive hearing loss <sup>a</sup>	28 (20.9)
Sensorineural hearing loss	25 (18.7)
Facial palsy	20 (14.9)
BPPV and other vestibulopathy	21 (15.7)
Brain hemorrhage	
Epidural hemorrhage	33 (24.6)
Subarachnoid hemorrhage	44 (32.8)
Subdural hemorrhage	48 (35.8)
Intracerebral hemorrhage	8 (6.0)
Intraventricular hemorrhage	7 (5.2)
Facial bone fractures	
Mandible	16 (11.9)
Maxilla	24 (17.9)
Zygoma	35 (26.1)
Orbital wall	46 (34.3)

Values are presented as number (%), number (range), or mean ± standard deviation.

BPPV = benign paroxysmal positional vertigo, CT = computed tomography.

<sup>a</sup>Of 28 subjects with conductive hearing loss, 16 had a clear indication of ossicular disruption on temporal bone CT, while the disruption in the remaining 12 was not clearly visible on CT, but there was a persistent air-bone gap of 10 dB or greater for at least a month.

**Table 2.** Comparison of FB fractures and complications of temporal bone fracture between the two groups

Characteristics	Group I (n = 65) without FB fracture	Group II (n = 69) with FB fracture	P value
Gender			0.130 <sup>a</sup>
Male	50 (76.9)	60 (87.0)	
Female	15 (23.1)	9 (13.0)	
Age, yr	48.1 ± 16.9	46.6 ± 16.3	0.588 <sup>b</sup>
Injury Severity Score	16.7 ± 7.3	19.0 ± 5.9	0.020 <sup>c</sup>
Major trauma	31 (47.7)	53 (76.8)	< 0.001 <sup>a</sup>
Brain hemorrhage	48 (73.8)	38 (55.1)	0.023 <sup>a</sup>
Facial palsy			0.022 <sup>b</sup>
Immediate type palsy	1 (1.5)	8 (11.6)	
Delayed type palsy	8 (12.3)	3 (4.3)	
Hearing loss			0.777 <sup>a</sup>
CHL	12 (18.5)	16 (23.2)	
SNHL	13 (20.0)	12 (17.4)	
Posttraumatic vertigo			0.014 <sup>a</sup>
BPPV	13 (20.0)	4 (5.8)	
Other vestibulopathy	3 (4.6)	1 (1.4)	

Values are presented as number (%) or mean ± standard deviation.

CHL = conductive hearing loss, FB = facial bone, SNHL = sensorineural hearing loss, BPPV = benign paroxysmal positional vertigo.

<sup>a</sup>P value from the  $\chi^2$  test; <sup>b</sup>P value from independent t-test; <sup>c</sup>P value from Mann-Whitney U test.

facial palsy (**Table 3**). TBCT findings suggestive of facial nerve canal injury were also significantly associated with the immediate paralysis (OR, 12.229; 95% CI, 2.465–60.670).

Although patients with FB fractures showed a relatively low incidence of delayed facial palsy, it was not identified as a risk factor in the multivariate analysis. Other factors, such as facial nerve canal injury and brain hemorrhage, were also not associated with delayed facial palsy in the univariate analysis (**Supplementary Table 1**).

**Table 3.** Multivariate logistic regression analysis of factors affecting immediate facial palsy

Variables	Univariate analysis <sup>a</sup>			Multivariate analysis <sup>b</sup>		
	OR	95% CI	P value	OR	95% CI	P value
Gender (female)	0.554	0.066–4.653	0.587			
Age	1.019	0.975–1.065	0.403			
ISS	1.064	0.961–1.178	0.235			
Major trauma	5.158	0.626–42.528	0.127			
Facial nerve canal fracture	9.911	2.378–41.309	0.002	12.229	2.465–60.670	0.002
Brain hemorrhage	1.125	0.268–4.716	0.872			
EDH	2.648	0.667–10.514	0.166			
SAH	1.700	0.433–6.673	0.447			
SDH	0.000	0.000	0.997			
ICH	2.107	0.230–19.290	0.509			
IVH	6.857	1.124–41.827	0.037	20.958	2.075–211.677	0.010
Facial bone fractures	8.393	1.019–69.109	0.048	16.420	1.298–207.738	0.031
Maxilla	2.476	0.573–10.695	0.224			
Mandible	2.265	0.428–11.996	0.336			
Zygoma	3.958	0.998–15.693	0.050			
Orbital wall	4.250	1.011–17.865	0.048			
Multiple fractures in facial bones	5.812	1.373–24.605	0.017			

OR = odds ratio, CI = confidence interval, ISS = Injury Severity Score, EDH = epidural hemorrhage, SAH = subarachnoid hemorrhage, SDH = subdural hemorrhage, ICH = intracerebral hemorrhage, IVH = intraventricular hemorrhage.

<sup>a</sup>Simple logistic regression analysis was used to identify significant variables.

<sup>b</sup>Multivariate logistic regression analysis was used to assess the risk factors in variables showing significance in the simple logistic regression; ‘facial fracture,’ ‘zygoma fracture,’ and ‘multiple fractures in facial bone’ were included in the initial multivariate analysis but excluded by the conditional backward elimination method.

**Table 4.** Multivariate logistic regression of factors affecting post-traumatic vertigo

Variables	Univariate analysis <sup>a</sup>			Multivariate analysis <sup>b</sup>		
	OR	95% CI	P value	OR	95% CI	P value
Gender (female)	4.118	1.379–12.299	0.011	3.585	1.163–11.047	0.026
Age	1.016	0.983–1.050	0.341			
ISS	0.936	0.863–1.014	0.107			
Major trauma	0.364	0.129–1.027	0.056			
Otic capsule injury in TBCT	1.766	0.186–16.802	0.621			
Brain hemorrhage	1.027	0.354–2.975	0.961			
EDH	0.934	0.282–3.090	0.911			
SAH	8.330	0.274–2.533	0.748			
SDH	2.250	0.806–6.284	0.122			
ICH	0.000	0.000	0.999			
IVH	0.000	0.000	0.999			
Facial bone fractures	0.246	0.076–0.800	0.020	0.276	0.083–0.914	0.035
Maxilla	0.980	0.258–3.716	0.976			
Mandible	0.000	0.000	0.998			
Zygoma	0.153	0.019–1.196	0.074			
Orbital wall	0.221	0.048–1.014	0.052			
Multiple fractures in facial skeletons	0.300	0.065–1.381	0.122			

OR = odds ratio, CI = confidence interval, ISS = Injury Severity Score, TBCT = temporal bone computed tomography, EDH = epidural hemorrhage, SAH = subarachnoid hemorrhage, SDH = subdural hemorrhage, ICH = intracerebral hemorrhage, IVH = intraventricular hemorrhage.

<sup>a</sup>Simple logistic regression analysis was used to identify significant variables.

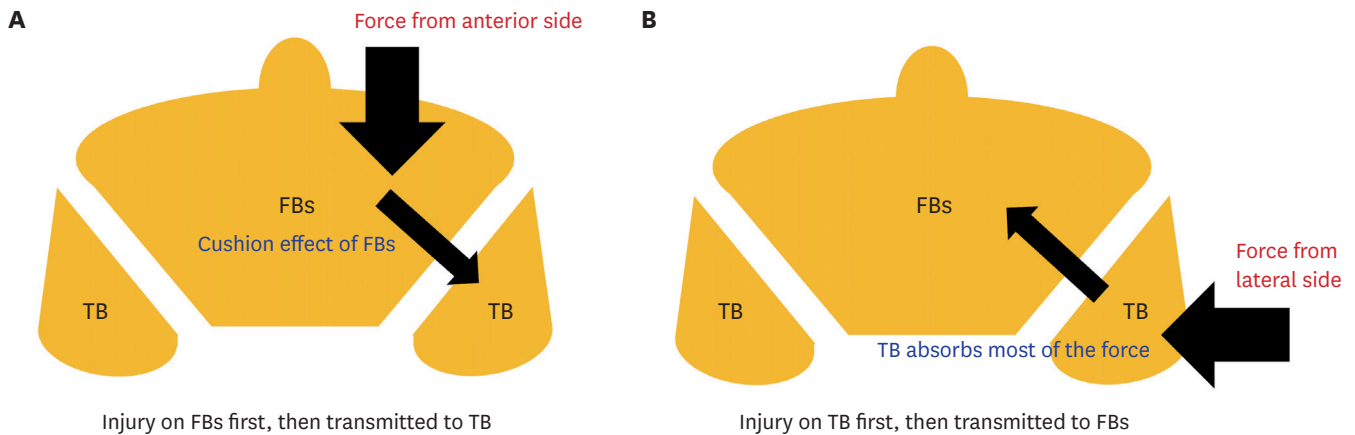
<sup>b</sup>Multivariate logistic regression analysis was used to assess the risk factors associated with variables showing significance in the simple logistic regression.

In posttraumatic vertigo, female gender was a risk factor (OR, 3.585; 95% CI, 1.163–11.047). Interestingly, FB fractures were identified as an associated factor that could lower the risk of posttraumatic vertigo (OR, 0.276; 95% CI, 0.083–0.914) (Table 4).

## DISCUSSION

The aim of this study was to explore the idea that FB fracture may have the cushion effect on TB fracture. Our key findings can be summarized as follows: 1) FB fractures were less frequently associated with delayed facial palsy, 2) FB fractures were a risk factor for immediate facial palsy, and 3) FB fractures may lower the risk of posttraumatic vertigo. However, based on these results, it is challenging to conclude that the cushion effect of FB fractures has an impact on the complications of TB fracture. In fact, the second and third findings appear to be contradictory to each other.

The findings indicate that FB fractures were actually a risk factor for immediate facial palsy, rather than providing cushioning. However, during the interpretation of the results, we identified a critical factor that we had previously overlooked—the direction in which the injury force was applied, especially whether the force was applied first to the FB or TB. Fig. 1 depicts the possible mechanisms for simultaneously causing FB and TB fractures. If the injury force was initially applied to the FBs and absorbed entirely by them, then a TB fracture might not occur. However, patients who had FB fractures without a TB fracture were not included in this study. On the other hand, if the force was applied to the FB first but not entirely absorbed, a TB fracture may occur (Fig. 1A), resulting in both FB and TB fractures. In this situation, the occurrence of the complications may be relatively low due to the cushion effect. Then, assuming that the injury caused the TB fracture first (Fig. 1B), if the force was completely absorbed by TB, FB fractures would not occur. However, the risk of complications would be relatively high. This scenario pertains to patients who have a TB fracture but not FB fractures. Table 5 provides an overview of the possible scenarios for FB and TB



**Fig. 1.** Directions of injury force that could be applied to FBs and the TB. **(A)** An injury may be applied to the FBs first, and then transmitted to the TB. **(B)** An injury may be applied to the TB first, and then transmitted to the FBs. FB = facial bone, TB = temporal bone.

**Table 5.** Magnitude and side of the injury force and the types of fractures

Side of the force	Magnitude of the force	
	Large force	Small force
From front	(1)	(2)
	FB fracture (+) TB fracture Cx (+/-)	FB fracture (+) TB fracture Cx (-)
From lateral	(3)	(4)
	FB fracture (+) TB fracture Cx (+)	FB fracture (-) TB fracture Cx (+)

Cx = complication, FB = facial bone, TB = temporal bone.

fractures, taking into account the direction and magnitude of the injury force. Scenario (3) is considered to correspond to severe complications, such as immediate facial palsy, and (1) and (2) represent scenarios where the cushion effect of FBs works. Posttraumatic vertigo may be an example of scenario (4).

This ultimately implies that immediate facial palsy must have resulted from a strong impact force that caused severe trauma, which is consistent with the findings of the multivariate analysis. The risk factors for immediate facial palsy were ‘FB fractures,’ ‘facial nerve canal injury identified on TBCT,’ and ‘IVH.’ Notably, IVH is a marker of severe traumatic injury; thus, these patients would have suffered a significantly greater impact.<sup>17</sup> The forces associated with these injury types would be absorbed by neither the FB nor the TB; therefore, FB and TB fractures would have occurred simultaneously. As a result, the cushion effect may work in some cases, particularly in patients in which the injury occurs from the force applied to the FB. The magnitude and direction of the injury force should be considered together. Although the direction of the force is often unknown in trauma patients, if only it is identified that the force was applied toward TB, FB fractures can be used as a clinical marker. It should be noted that the simultaneous occurrence of TB and FB fractures suggests that a substantial force has been applied, which offsets the protective effect of TB; thus, there is a high possibility of facial nerve injury.<sup>18</sup>

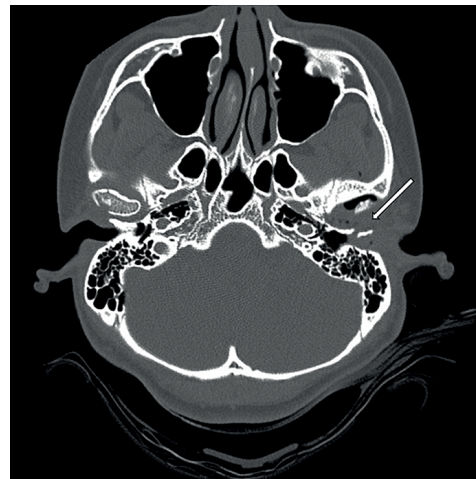
Although the magnitude of the injury force would be a major factor in the complications, the multivariate analysis revealed that factors related to the severity, such as ‘ISS’ and ‘major trauma,’ were not associated with any complications. It was thought that this was because

the ISS system dealt with all injuries in the whole body. For example, even if the damage to the head and neck region was minor, the score could increase if other regions were severely injured. Meanwhile, there has also been suggested that the ISS system cannot properly reflect the severity.<sup>19</sup> Therefore, although the association was not identified in the multivariate analysis, the magnitude of the injury force should be considered in the management of the complications of TB fracture, along with its direction of the force.

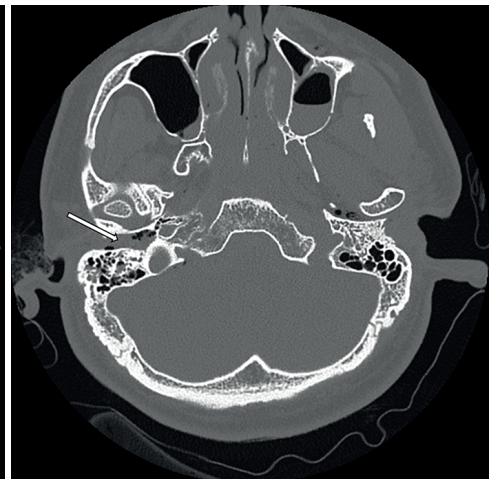
When a TB fracture occurs, the tympanic membrane and mastoid cavities are filled with a bloody discharge; this is called hemotympanum. Similarly, discharge fill of the tympanic cavity is seen in acute otitis media (AOM). In severe cases of AOM, facial palsy and vertigo can occur.<sup>20</sup> For the same reason as cases of AOM, patients with a TB fracture may only experience either delayed facial palsy or posttraumatic vertigo. **Fig. 2A** shows an axial image of a patient with fracture and dislocation of the mandible, as well as a TB fracture; blood discharge fills the temporomandibular joint area, but the tympanic cavity remains relatively well-aerated. **Fig. 2B**, on the other hand, shows a soft tissue lesion filling mainly the tympanic cavity and external auditory canal; this patient actually experienced posttraumatic vertigo. One more hypothesis we would like to suggest is a decompression effect by the bony fracture. Similar to “compartment syndrome,” when the internal pressure becomes elevated due to the discharge caused by trauma, it could damage the surrounding tissue. If only a TB fracture is present, then the high internal pressure caused by bleeding should be fully covered only by tympanic cavity, similar to that shown in **Fig. 2B**. However, when FB fractures occur together with a TB fracture, the pressure may be dispersed, as shown in **Fig. 2A**, in which there is no internal pressure, and the risk of facial palsy and posttraumatic vertigo would be low. It might be another hypothesis to explain the results; we acknowledge that the data was insufficient to fully prove the effect. However, this should be taken into consideration for future studies.

To summarize, the protective “cushion effect” of the FB on a TB fracture may be partially reflected when the injury force is applied mainly to the FB. Especially, in a patient with a TB

**A** F/25, Lt. temporal bone fracture with Lt. mandible fracture and dislocation



**B** M/42, Rt. temporal bone fracture without facial fracture



**Fig. 2.** A decompression effect by the bony fracture. **(A)** The clear left middle ear space is noted. A soft tissue density is mainly shown in the temporomandibular joint area (white arrow). **(B)** The soft tissue density (white arrow) only fills the middle ear space. Lt. = left, Rt. = right.



fracture only (without a FB fracture), it should be recognized that the incidence of delayed facial palsy or posttraumatic vertigo may be higher.

## SUPPLEMENTARY MATERIAL

### Supplementary Table 1

Multivariate logistic regression of factors affecting delayed facial palsy

[Click here to view](#)

## REFERENCES

1. Worlax HE, Hamill ME, Gilbert CM, Reed CM, Faulks ER, Love KM, et al. Is the face an air bag for the brain and torso?-the potential protective effects of severe midface fractures. *Am Surg* 2018;84(8):1299-302. [PUBMED](#) | [CROSSREF](#)
2. Lee KF, Wagner LK, Lee YE, Suh JH, Lee SR. The impact-absorbing effects of facial fractures in closed-head injuries. An analysis of 210 patients. *J Neurosurg* 1987;66(4):542-7. [PUBMED](#) | [CROSSREF](#)
3. Chang CJ, Chen YR, Noordhoff MS, Chang CN. Maxillary involvement in central craniofacial fractures with associated head injuries. *J Trauma* 1994;37(5):807-11. [PUBMED](#) | [CROSSREF](#)
4. Pappachan B, Alexander M. Biomechanics of cranio-maxillofacial trauma. *J Maxillofac Oral Surg* 2012;11(2):224-30. [PUBMED](#) | [CROSSREF](#)
5. Pappachan B, Alexander M. Correlating facial fractures and cranial injuries. *J Oral Maxillofac Surg* 2006;64(7):1023-9. [PUBMED](#) | [CROSSREF](#)
6. Tse KM, Tan LB, Lee SJ, Lim SP, Lee HP. Investigation of the relationship between facial injuries and traumatic brain injuries using a realistic subject-specific finite element head model. *Accid Anal Prev* 2015;79:13-32. [PUBMED](#) | [CROSSREF](#)
7. Hasso AN, Ledington JA. Traumatic injuries of the temporal bone. *Otolaryngol Clin North Am* 1988;21(2):295-316. [PUBMED](#) | [CROSSREF](#)
8. Montava M, Masson C, Lavieille JP, Mancini J, Soussan J, Chaumoitre K, et al. Temporal bone fracture under lateral impact: biomechanical and macroscopic evaluation. *Med Biol Eng Comput* 2016;54(2-3):351-60. [PUBMED](#) | [CROSSREF](#)
9. Kong TH, Lee JW, Park YA, Seo YJ. Clinical features of fracture versus concussion of the temporal bone after head trauma. *J Audiol Otol* 2019;23(2):96-102. [PUBMED](#) | [CROSSREF](#)
10. Kim SY, Kim YJ, Kim YH, Park MH. Audiologic patterns of otic capsule preserving temporal bone fracture: effects of the affected subsites. *Clin Exp Otorhinolaryngol* 2016;9(3):206-11. [PUBMED](#) | [CROSSREF](#)
11. Baker SP, O'Neill B, Haddon W Jr, Long WB. The injury severity score: a method for describing patients with multiple injuries and evaluating emergency care. *J Trauma* 1974;14(3):187-96. [PUBMED](#) | [CROSSREF](#)
12. Palmer CS, Gabbe BJ, Cameron PA. Defining major trauma using the 2008 Abbreviated Injury Scale. *Injury* 2016;47(1):109-15. [PUBMED](#) | [CROSSREF](#)
13. Schultz RC. One thousand consecutive cases of major facial injury. *Rev Surg* 1970;27(6):394-410. [PUBMED](#)
14. Park CH, Chung KJ, Kim TG, Lee JH, Kim IK, Kim YH. Big data statistical analysis of facial fractures in Korea. *J Korean Med Sci* 2020;35(7):e57. [PUBMED](#) | [CROSSREF](#)

15. House JW, Brackmann DE. Facial nerve grading system. *Otolaryngol Head Neck Surg* 1985;93(2):146-7.  
[PUBMED](#) | [CROSSREF](#)
16. Kim SJ, Lee HY. Acute peripheral facial palsy: recent guidelines and a systematic review of the literature. *J Korean Med Sci* 2020;35(30):e245.  
[PUBMED](#) | [CROSSREF](#)
17. Shibahashi K, Sugiyama K, Okura Y, Hoda H, Hamabe Y. Intraventricular hemorrhage after head injury: a multicenter, retrospective, cohort study. *World Neurosurg* 2018;114:e350-5.  
[PUBMED](#) | [CROSSREF](#)
18. Kang TK, Ha R, Oh JH, Sunwoo W. The potential protective effects of temporal bone pneumatization: a shock absorber in temporal bone fracture. *PLoS One* 2019;14(5):e0217682.  
[PUBMED](#) | [CROSSREF](#)
19. Jung K, Lee JC, Kim J. Injury severity scoring system for trauma patients and trauma outcomes research in Korea. *J Acute Care Surg* 2016;6(1):11-7.  
[CROSSREF](#)
20. Kitsko DJ, Dohar JE. Inner ear and facial nerve complications of acute otitis media, including vertigo. *Curr Allergy Asthma Rep* 2007;7(6):444-50.  
[PUBMED](#) | [CROSSREF](#)