

**Role of the Nfa1 Protein in Pathogenic
Naegleria fowleri Cocultured with CHO
Target Cells**

Su-Yeon Kang, Kyoung-Ju Song, Seok-Ryoul Jeong,
Jong-Hyun Kim, Sun Park, Kyongmin Kim, Myung-Hee
Kwon and Ho-Joon Shin
Clin. Diagn. Lab. Immunol. 2005, 12(7):873. DOI:
10.1128/CDLI.12.7.873-876.2005.

Updated information and services can be found at:
<http://cvi.asm.org/content/12/7/873>

	<i>These include:</i>
REFERENCES	This article cites 19 articles, 4 of which can be accessed free at: http://cvi.asm.org/content/12/7/873#ref-list-1
CONTENT ALERTS	Receive: RSS Feeds, eTOCs, free email alerts (when new articles cite this article), more»

Information about commercial reprint orders: <http://journals.asm.org/site/misc/reprints.xhtml>
To subscribe to to another ASM Journal go to: <http://journals.asm.org/site/subscriptions/>

NOTES

Role of the Nfa1 Protein in Pathogenic *Naegleria fowleri* Cocultured with CHO Target Cells

Su-Yeon Kang, Kyoung-Ju Song, Seok-Ryoul Jeong, Jong-Hyun Kim, Sun Park, Kyongmin Kim, Myung-Hee Kwon, and Ho-Joon Shin*

Department of Microbiology, Ajou University School of Medicine, Suwon 442-749, Korea

Received 7 March 2005/Returned for modification 14 April 2005/Accepted 21 April 2005

***Naegleria fowleri*, a free-living amoeba, exists as a virulent pathogen which causes fatal primary amoebic meningoencephalitis in experimental animals and humans. Using infected and immune mouse sera, we previously cloned an *nfa1* gene from a cDNA library of *N. fowleri* by immunoscreening. The *nfa1* gene (360 bp) produced a recombinant 13.1-kDa protein, and the Nfa1 protein showed pseudopodium-specific immunolocalization on a trophozoite of *N. fowleri*. In this study, the role of the Nfa1 protein as a cell contact mechanism of *N. fowleri* cocultured with target cells was observed by an immunofluorescence assay with an anti-Nfa1 polyclonal antibody. Using confocal microscopic findings, the Nfa1 protein was located on the pseudopodia of *N. fowleri* trophozoites. The Nfa1 protein in *N. fowleri* trophozoites cocultured with CHO target cells was also located on pseudopodia, as well as in a food cup formed as a phagocytic structure in close contact with target cells. The amount of *nfa1* mRNA of *N. fowleri* was strongly increased 6 h after coculture.**

Naegleria fowleri, a free-living amoeba, is commonly found in soil and in warm bodies of fresh water, such as lakes, rivers, and hot springs. It is also found in unchlorinated swimming pools and in warm water discharge pools from industrial plants (1, 5, 10, 15). *N. fowleri* produces an acute lethal central nervous system disease called primary amoebic meningoencephalitis. *N. fowleri* trophozoites penetrate the nasal mucosa and enter the brain through the cribriform plate. The organisms are capable of multiplying in the tissues of the central nervous system and may be isolated from spinal fluid (9, 11, 14).

N. fowleri is cytopathogenic to a variety of cultured mammalian cells (12, 18, 20). The proposed mechanism(s) of the cytopathic action of this organism for mammalian cells includes active phagocytosis of cells by pseudopodium formation (11). With regard to host tissue invasion, the adherence of amoebae to host cells is the most important step in the pathogenicity mechanism of *N. fowleri*, when a specific pseudopodial projection, called an amoebastome, is formed (13, 14).

In a previous report, a gene (called *nfa1*) was cloned from a cDNA library of *N. fowleri* by immunoscreening using infected and immune mouse sera (17). The *nfa1* gene had a coding nucleotide sequence of 360 bp, producing a recombinant protein (rNfa1) of 13.1 kDa (17). An anti-Nfa1 polyclonal antibody, obtained from mice immunized with an rNfa1 protein, was used in immunocytochemistry that showed the Nfa1 protein to be an indicator of pseudopodium-specific immunolocalization on a trophozoite of *N. fowleri* (3). An anti-Nfa1 antibody then has a decreasing effect on the cytotoxicity of *N.*

fowleri trophozoites against CHO (Chinese hamster ovary) cells and the proliferation of *N. fowleri* trophozoites in a dose-dependent manner (8), much like the treatment of an anti-Nfa1 antibody in a coculture system (3).

In spite of the widespread use of free-living amoebae to understand protozoan pathogenicity, no information is yet fully available regarding the presence of pathogen-related proteins and their functions in these organisms. Moreover, the role of a newly cloned Nfa1 protein has not been fully carried out. In this study, by observing the localization of the Nfa1 protein in the coculture system with target cells by the immunofluorescence assay, we observed the role of the Nfa1 protein in a cell contact mechanism of *N. fowleri*. In addition, the transcription of *nfa1* mRNA of *N. fowleri* during the coculture system was identified by Northern blotting with an *nfa1*-specific probe.

N. fowleri trophozoites (Cater NF69 strain, ATCC 30215) were axenically cultured in Nelson's medium at 37°C (20). CHO cells were cultured with Earle's minimum essential medium containing 10% fetal bovine serum (complete Earle's minimum essential medium) at 37°C in a 5% CO₂ incubator, in accordance with the methods of a previous paper (8). In a cocultivating system, *N. fowleri* trophozoites (4×10^5) were cocultured with CHO cells (4×10^5).

To obtain an rNfa1 fusion protein, the expression of the *nfa1* gene and the purification of the recombinant protein were performed according to the method of a previous paper (17). The purified DNA (5 µg/µl), obtained from the PCR-T7/NT TOPO expression vector (Invitrogen, Groningen, The Netherlands) and containing an *nfa1* gene, was subsequently transformed into a BL21(DE3) pLysS *Escherichia coli* strain by the heat shock method. Cells were cultured at 37°C in LAC (Luria-Bertani medium containing 100 mg/ml of ampicillin and 34

* Corresponding author. Mailing address: Department of Microbiology, Ajou University School of Medicine, Suwon 442-749, Korea. Phone: (82) 31-219-5076. Fax: (82) 31-219-5079. E-mail: hjshin@ajou.ac.kr.

mg/ml of chloramphenicol) plates for selection. A transformed colony was selected and cultured in the LAC broth at 37°C until the absorbance reached 0.5 to 0.8 at 600 nm. IPTG (isopropyl- β -D-thiogalactopyranoside; 1 mM) was then added to the medium. After 4 h of incubation, the cells were harvested by centrifugation ($6,000 \times g$ for 15 min). Cell extracts were compared with those of nontransformed BL21(DE3) pLysS by sodium dodecyl sulfate-polyacrylamide gel electrophoresis (SDS-PAGE), and the presence of the expressed gene product was confirmed by Western blotting.

For the production of an anti-Nfa1 polyclonal antibody, the rNfa1 protein (50 μ g/200 μ l/mouse) was mixed with an equal volume of complete Freund's adjuvant (Sigma) and injected intraperitoneally into 8-week-old female BALB/c mice (20 g; purchased from the Korea Institute of Science and Technology, Daejeon, Korea). The mice were intraperitoneally boosted twice a week for another 4 weeks with the rNfa1 protein (25 μ g/mouse) containing an equal volume of incomplete Freund's adjuvant (Sigma). Six weeks later, an anti-Nfa1 polyclonal serum was separated from the blood of the mice by centrifugation at $2,500 \times g$ for 30 min at 4°C. Enzyme-linked immunosorbent assay (ELISA) was performed with a purified Nfa1 protein (5 μ g/ml) and with a rabbit anti-mouse whole immunoglobulin (1:10,000 dilution) conjugated with alkaline phosphate (Sigma). Western blotting was performed for the rNfa1 protein, in accordance with the method described in a previous paper (8).

For immunofluorescence studies, cultivating trophozoites of *N. fowleri* or CHO cells used as target cells were fixed in 10% formaldehyde for 30 min at room temperature, permeabilized in 1% ammonium hydroxide, washed in Tween 20 for 5 min, and extensively washed with 0.82% saline. *N. fowleri* was incubated overnight at 4°C with an anti-Nfa1 polyclonal antibody diluted serially with phosphate-buffered saline (PBS; pH 7.4). This was followed by incubation with the appropriate fluorescein isothiocyanate (FITC)-conjugated anti-mouse immunoglobulin G antibody (at a dilution of 1:100) (Sigma) for 2 h at 4°C. For healthy-mouse serum samples, *N. fowleri* trophozoites and CHO cells were stained with only the FITC-conjugated anti-mouse immunoglobulin G antibody. For labeling live target cells, CHO cells were incubated with 20 μ M 5- (and 6)-chloromethyl SNARF-1 (red color) (Molecular Probes) for 1 h at 37°C. Dimethyl sulfoxide stock solutions (100 μ l in SNARF stock) are typically diluted 1:1,000 into loading buffer (20 μ l in PBS) to reduce the exposure of cells to dimethyl sulfoxide. The loading buffer should be serum free because serum often contains esterase activity. The total fluorescence of cells was visualized in an optical section produced by an Olympus FV-500 confocal microscope (Olympus, Japan). The collected images were processed using Adobe Photoshop 7.0 software.

In order to observe the change of *nfa1* mRNA transcription in *N. fowleri* cocultured with target cells, the total RNA of *N. fowleri* trophozoites and CHO cells was extracted using the RNazol B reagent (TEL-TEST; Firndwood, TX) and used for Northern blot analysis. Briefly, each cell (2×10^5) was collected in a sterile 15-ml conical tube, centrifuged at $300 \times g$ for 5 min, and washed once with PBS. The pellet was then lysed with 500 μ l of RNazol B reagent, and RNA was extracted with 50 μ l of chloroform. The tube was inverted 10 times and cooled on ice for 5 min. After centrifugation at

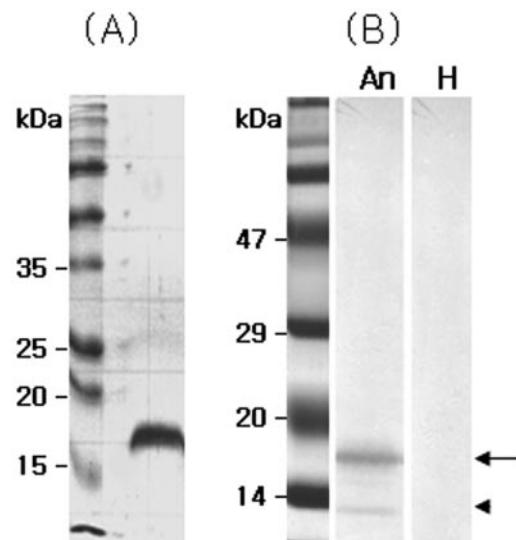


FIG. 1. SDS-PAGE band pattern of a recombinant Nfa1 fusion protein expressed from the *nfa1* gene of *Naegleria fowleri* (A) and its Western blotting band patterns with an anti-Nfa1 antibody (B). An, anti-Nfa1 antibody; H, normal mouse serum; arrow, uncut 17-kDa protein; arrowhead, cut 13.1-kDa protein.

$10,000 \times g$ at 4°C for 20 min, the aqueous phase, which contained RNA, was transferred to a fresh tube and precipitated with 250 μ l of isopropanol at 4°C for 2 h. After centrifugation at $10,000 \times g$ at 4°C for 8 min, RNA pellets were washed in 80% ethanol, centrifuged, dried with a speed-vacutainer, and finally dissolved in 50 μ l of diethyl pyrocarbonate-treated distilled water. In order to perform the Northern blot technique, total RNA (30 μ g) was denatured, electrophoresed on a 1% agarose gel containing formaldehyde, and blotted onto a nylon membrane. RNA on the membrane was then hybridized with a 32 P-labeled, randomly primed probe specific to the *nfa1* gene.

For the expression of an *nfa1* gene using an *E. coli* expression system, *nfa1* was inserted into the PCR-T7/NT TOPO vector. It was introduced into an *E. coli* strain, BL21, and expressed by IPTG induction. The 17-kDa (approximate) fusion protein was purified from *E. coli* extracts and confirmed by SDS-PAGE (Fig. 1A).

To obtain a purified recombinant Nfa1 protein, a 17-kDa fusion protein was purified using a nickel resin column and enzyme digestion. Finally, the purified protein eluted from the gels had a molecular mass of 13.1 kDa, which corresponded well to the size observed in previous research (Fig. 1). Anti-Nfa1 polyclonal antibodies were collected from mice immunized with rNfa1 proteins. The specific reactivities of these against the Nfa1 protein were observed by ELISA and Western blotting (Fig. 1B). Values of anti-Nfa1 polyclonal antibodies obtained by ELISA ranged from 0.212 ± 0.021 (1:10,000 dilution, mean \pm standard deviation [$n = 5$]) to 1.213 ± 0.024 (1:200 dilution), which showed a difference from the 0.112 ± 0.005 value (1:200 dilution) of the normal sera and also the 0.109 ± 0.005 value of the PBS control.

The presence of Nfa1 protein in amoebas fixed during locomotion was initially examined by staining them with anti-Nfa1 polyclonal antibodies and FITC conjugates and by recording their total fluorescence with a confocal microscope. By confo-

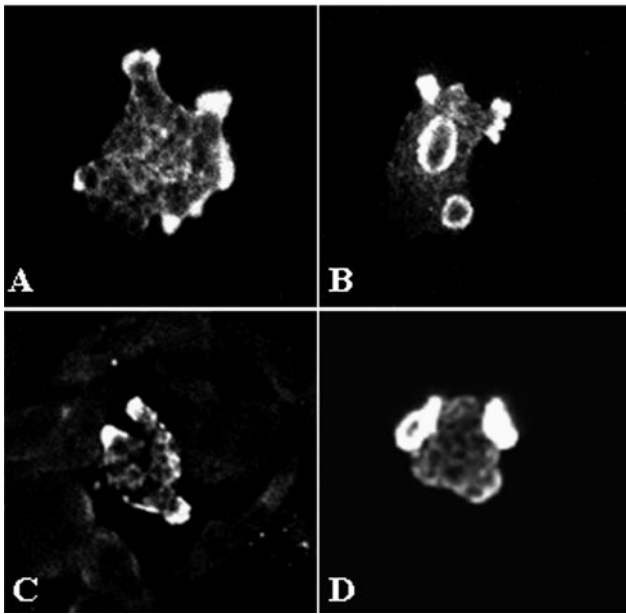


FIG. 2. Confocal microscopic findings of *Naegleria fowleri* trophozoites immunostained with an anti-Nfa1 polyclonal antibody and an FITC conjugate. Strong fluorescent signals were shown in pseudopodia, especially in the food cups of *N. fowleri* trophozoites in media (A, B) and cocultured with CHO cells (C, D) (magnification, $\times 400$).

cal microscopy, the Nfa1 protein of *N. fowleri* trophozoites in cultivation with Nelson's medium was found to be concentrated in pseudopodia (Fig. 2A) and protrusive food cups (Fig. 2B). Subsequently, in *N. fowleri* cocultured with CHO cells, the Nfa1 protein was shown in food cups, as well as in the pseudopods of amoebae (Fig. 2C and D). In contrast, no fluorescent signals were seen in CHO cells (Fig. 2C and D).

To observe the role of the Nfa1 protein of *N. fowleri* trophozoites cocultured with target cells, competitive counterstaining for amoebae and CHO cells was performed with an FITC conjugate and with 5 (and 6)-chloromethyl SNARF-1, respectively. After 1 h of cultivation, the Nfa1 protein of *N. fowleri* trophozoites was concentrated at the point of contact with CHO cells. Strong fluorescent signals were shown, especially in pseudopodia of *N. fowleri* trophozoites (Fig. 3A and B). The food cups of *N. fowleri* trophozoites have rarely been found. Instead, the Nfa1 protein was often observed on the area in contact with the target cells. After 3 h of cultivation, *N. fowleri* trophozoites showed continuing attachment on the surfaces of CHO cells. Strong fluorescent signals were shown in pseudopodia (Fig. 3C) and food cups (Fig. 3D) of *N. fowleri* trophozoites. At 6 h of cultivation, strong fluorescent signals were shown in many *N. fowleri* trophozoite food cups (Fig. 3E, F). Several red spots that seemed to be fragmented CHO cell debris are shown in the cytoplasm of *N. fowleri* trophozoites (Fig. 3F).

To observe the transcription of the *nfa1* mRNA, total RNA was extracted from *N. fowleri* trophozoites and CHO cells in a coculture system (Fig. 4A). According to Northern blotting using an *nfa1* gene-specific probe, the *nfa1* mRNA was transcribed better in *N. fowleri* in the coculture system than was *N. fowleri* alone. Moreover, the *nfa1* mRNA was not transcribed

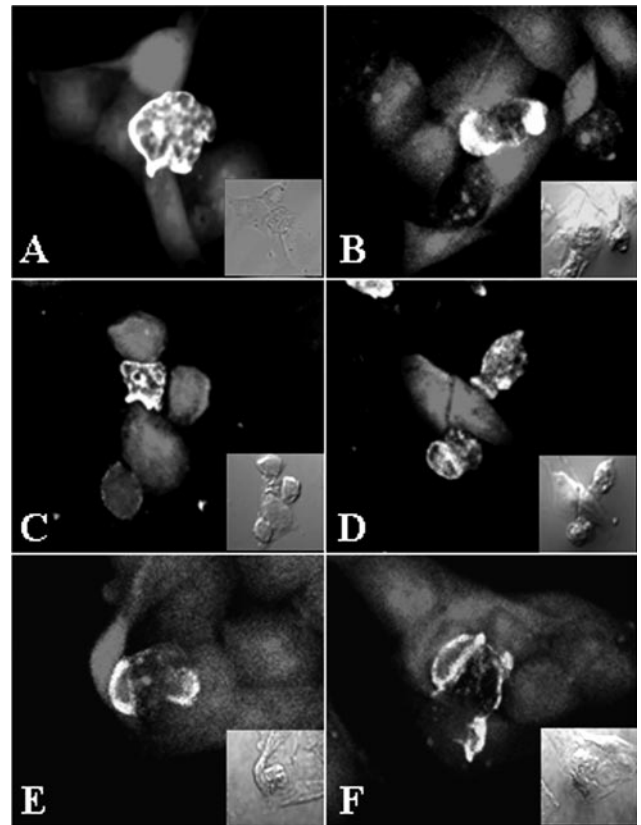


FIG. 3. Immunolocalization of the Nfa1 protein in *Naegleria fowleri* trophozoites cocultured with CHO cells stained with 5 (and 6)-chloromethyl SNARF-1. Using a confocal microscope, strong fluorescent signals were observed in pseudopodia of *N. fowleri* trophozoites at 1 h (A, B) and in food cups at 3 h (C, D). At 6 h postincubation (E, F), strong fluorescent signals occurred in the food cups of the *N. fowleri* trophozoite, which included ingested dead CHO cells. The light microscopic findings are in each inset (magnification, $\times 400$).

in CHO cells. In particular, the amount of *nfa1* mRNA of *N. fowleri* was increased strongly by 6 h after coculture (Fig. 4B).

In the previous study, the immunolocalization study of Nfa1 protein revealed that this protein was abundant in pseudopodia and around the food vacuoles of *N. fowleri* trophozoites (3). This suggests that the Nfa1 protein is required for amoeba movement and food ingestion. It provides no information about *N. fowleri* cocultured with target cells that are specialized to different functions that comprise the mechanisms of *N. fowleri* pathogenic activities: cell surface contraction, frontal

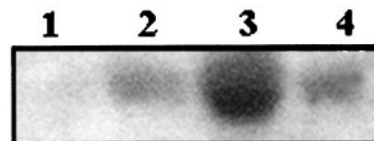


FIG. 4. Northern blot finding of RNA extracted from *Naegleria fowleri* trophozoites and/or CHO cells. The *nfa1* mRNA was strongly transcribed 6 h after coculture. Lane 1, CHO cells only; lane 2, *N. fowleri* cocultured with CHO cells for 3 h; lane 3, *N. fowleri* cocultured with CHO cells for 6 h; lane 4, *N. fowleri* only.

pseudopodium polymerization and protrusive activity, and cell anchoring to the substratum.

In this experiment, it was shown that Nfa1 protein was localized in the food cups, which play a role in the cell contact mechanism of *N. fowleri*. By confocal microscopy, the Nfa1 protein of *N. fowleri* trophozoites cocultured with CHO cells was located on pseudopodia in contact with target cells and in a food cup formed as a phagocytic structure. In addition, the amount of *nfa1* mRNA of *N. fowleri* cocultured with CHO cells was increased 6 h after coculture as determined by Northern blotting with an *nfa1*-specific probe. In other words, it seemed that the Nfa1 protein played a role in the formation of food cups as a phagocytic activity.

The proposed mechanisms of cytopathogenicity for *N. fowleri* include phagocytosis, release of cytolytic substances, and the presence of a biologically active component (4). Phagocytosis is a basic function of this amoeba and one that causes the destruction of cells, whether in cell culture or in human tissue. It is, therefore, intimately involved in pathogenesis (12). The process has been named trogocytosis, the piecemeal engulfment of mouse embryo cells by *N. fowleri* (12). It is now known that trogocytosis is accomplished by amoebastomes (2), which amoebae use to engulf particles of various sizes, including cultivated mammalian cells. In addition to phagocytosis and trogocytosis, *N. fowleri* seems to injure cultivated mammalian cells by another contact-mediated means (19). In contrast, Pettit et al. (16) demonstrated the ingestion of whole cells or cell debris by phagocytosis but concluded that trogocytosis was not involved. In addition, sucker-like structures, termed amoebastomes and thought to be involved in the engulfment of particles, have also been demonstrated (6, 18).

In previous reports, contact-dependent killing mechanisms have been determined to be operative as well and are likely to involve the ingestion of nerve cell membranes through a food cup structure on the surface of an amoeba (4, 13). Furthermore, *N. fowleri* cells are highly phagocytic, and it is likely that they endocytose and also destroy nerve cells through a contact-dependent killing mechanism (7, 19).

In this study, the Nfa1 protein was located mainly at the tips of the pseudopodia of amoebae and especially at the food cups in *N. fowleri* trophozoites cocultured with target cells. At 6 h of cultivation, several red spots which appeared to be fragmented CHO cell debris were observed in the cytoplasm of *N. fowleri* trophozoites. It should be reiterated that the Nfa1 protein of free-living amoebae is necessary for locomotion and food cup formation. Consequently, trophozoites of *N. fowleri* destroyed several CHO cells in a time-dependent manner, while activating the Nfa1 protein expression involved in food cup formation. In another study, an anti-Nfa1 antibody caused a decreasing effect on the cytotoxicity of *N. fowleri* trophozoites against

CHO cells (8). Finally, in this study we have elucidated that the Nfa1 protein was involved in the formation of food cups, which play an important role in phagocytic activity as a cell contact mechanism in pathogenic *N. fowleri*.

This study was supported by a grant (no. R05-2003-000-10314-0) from the Basic Research Program of the Korea Science & Engineering Foundation.

REFERENCES

- Barnett, N. D., A. M. Kaplan, R. J. Hopkin, M. A. Saubolle, and M. F. Rudinsky. 1996. Primary amoebic meningoencephalitis with *Naegleria fowleri*. *Pediatr. Neurol.* **15**:230-234.
- Brown, T. 1979. Observations by immunofluorescence microscopy and electron microscopy on the cytopathogenicity of *Naegleria fowleri* in mouse embryo-cell cultures. *J. Med. Microbiol.* **12**:363-371.
- Cho, M. S., S. Y. Jung, S. Park, K. H. Kim, H. I. Kim, S. Sohn, H. J. Kim, K. I. Im, and H. J. Shin. 2003. Immunological characterizations of a cloned 13.1-kilodalton protein from pathogenic *Naegleria fowleri*. *Clin. Diagn. Lab. Immunol.* **10**:954-959.
- Cline, M., R. Carchman, and F. Marciano-Cabral. 1986. Movement of *Naegleria fowleri* stimulated by mammalian cells in vitro. *J. Protozool.* **33**:10-13.
- Culbertson, C. G. 1971. The pathogenicity of soil amoebas. *Annu. Rev. Microbiol.* **25**:231-254.
- Diaz, J., A. Osuna, M. J. Rosales, J. Cifuentes, and C. Mascaró. 1991. Sucker-like structures in two strains of *Acanthamoeba*: scanning electron microscopy study. *Int. J. Parasitol.* **21**:365-367.
- Im, K. I., and H. J. Shin. 2003. *Acanthamoeba sohi*, n. sp., a pathogenic Korean isolate YM-4 from a freshwater fish. *Korean J. Parasitol.* **41**:181-188.
- Jeong, S. Y., S. Y. Kang, S. C. Lee, K. J. Song, K. I. Im, and H. J. Shin. 2004. Decreasing effect of an anti-Nfa1 polyclonal antibody on the in vitro cytotoxicity of pathogenic *Naegleria fowleri*. *Korean J. Parasitol.* **42**:35-40.
- John, D. T. 1982. Primary amoebic meningoencephalitis and the biology of *Naegleria fowleri*. *Annu. Rev. Microbiol.* **36**:101-123.
- Kollars, T. M., and W. E. Wilhelm. 1996. The occurrence of antibodies to *Naegleria* species in wild mammals. *J. Parasitol.* **82**:73-77.
- Ma, P., G. S. Visvesvara, A. J. Martinez, F. H. Theodore, P. M. Daggett, and T. K. Sawyer. 1990. *Naegleria* and *Acanthamoeba* infections. *Rev. Infect. Dis.* **12**:490-513.
- Marciano-Cabral, F., M. Patterson, D. T. John, and S. G. Bradley. 1982. Cytopathogenicity of *Naegleria fowleri* and *Naegleria gruberi* for established mammalian cell cultures. *J. Parasitol.* **68**:1110-1116.
- Marciano-Cabral, F., and D. T. John. 1983. Cytopathogenicity of *Naegleria fowleri* for rat neuroblastoma cell cultures: scanning electron microscopy study. *Infect. Immun.* **40**:1214-1217.
- Marciano-Cabral, F. 1988. Biology of *Naegleria* spp. *Microbiol. Rev.* **52**:114-133.
- Page, F. C. 1967. Re-definition of the genus *Acanthamoeba* with descriptions of three species. *J. Protozool.* **14**:709-724.
- Pettit, D. A. D., J. Williamson, G. A. Cabral, and F. Marciano-Cabral. 1996. In vitro destruction of nerve cell cultures by *Acanthamoeba* spp.: a transmission and scanning electron microscopy study. *J. Parasitol.* **82**:769-777.
- Shin, H. J., M. S. Cho, S. Y. Jung, H. I. Kim, S. Park, H. J. Kim, and K. I. Im. 2001. Molecular cloning and characterization of a gene encoding a 13.1 kDa antigenic protein of *Naegleria fowleri*. *J. Eukaryot. Microbiol.* **48**:713-717.
- Shin, H. J., and K. I. Im. 2004. Pathogenic free-living amoeba in Korea. *Korean J. Parasitol.* **42**:93-119.
- Visvesvara, G. S., and A. J. Martinez. 1999. Protozoa: free-living amoebae, p. 33.1-33.6. In D. Armstrong, and S. Cohen (ed.), *Infectious diseases*. Mosby, London, United Kingdom.
- Willært, E. 1971. Isolement et culture *in vitro* des amibes de genre *Naegleria*. *Ann. Soc. Belg. Med. Trop.* **51**:701-708.