

두경부암에 의한 안면부와 경부 피부의 침습과 전이

최은창 · 고윤우 · 김문석 · 김현준 · 정태영 · 최재진 · 김철호 · 김영호

Invasions and Metastases of Facial and Neck Skin by Head and Neck Cancer

Eun Chang Choi, MD, Yoon Woo Koh, MD, Moon Suk Kim, MD, Hyun Joon Kim, MD,
Tae Young Chung, MD, Jae Jin Choi, MD, Chul-Ho Kim, MD and Young-Ho Kim, MD

Department of Otorhinolaryngology, Yonsei University College of Medicine, Seoul, Korea

ABSTRACT

Background and Objectives : This study was designed to review the incidence of skin involvement in the head and neck cancer. We also reviewed its pattern, treatment results, and prognostic significance of skin invasion and metastases. **Materials and Methods** : We carried out an retrospective evaluation of 41 patients who required resection of the facial or neck skin during surgery for their head and neck cancer in the last ten years. Patients with head and neck skin cancer were excluded from this study. Patients who developed skin involvement were evaluated with regard to the primary origin of tumor, the tumor stage, and the pattern of skin involvement, treatment and outcome. The cases were classified into four groups : firstly, a group with the presence of skin scar made by previous biopsy ; secondly, a group with tumor fixed to skin ; thirdly, a group with skin resected with a sufficient resection marginal, and lastly a group with gross involvement of skin by tumor. **Results** : Among 41 patients who required resection of the skin, patients with skin invasion were noted in 24 cases. Only one out of four cases of the biopsy group had skin involvement whereas a half of the fixed group had skin invasion. For the marginal group, only two cases had invasion of skin. The treatment result of patients with skin involvement had poor prognosis compared to patients without skin involvement. In particular, patients with skin metastasis had extremely poor survival. **Conclusions** : Skin involvement in the head and neck cancer indicates a poor prognosis, and should not be considered for surgery. (**Korean J Otolaryngol 2001;44:517-21**)

KEY WORDS : Skin metastases · Skin involvement · Head and neck cancer.

가 가

1-6)

가

6)7)

가 가

가

: 2000 9 18 / : 2001 2 27
: , 135 - 270 134

가

: (02) 361 - 8470, 8481 · : (02) 393 - 0580
E - mail : eunchangmd@yumc.yonsei.ac.kr

1990 1999

가

가

41

가 32 9

27 78 57 (9), (8), (7), (6)

35 가

15 , 11 , 1 cm

9 6 (ad - enoid cystic carcinoma) 2 (mu - coepidermoid carcinoma), (spindle cell carcinoma), carcinoma ex pleomorphic adenoma, (rhabdomyosarcoma) 1

21

20

18 가

(, biopsy group),

(, fixation group),

가 10 (, margin group).

가 4 2

4 2

Table 1. Patterns of skin involvement in head and neck cancers

Patterns (n = No of patients)	Skin involvement (%)
Skin scar by incisional biopsy (n = 4) (Biopsy group)	1 (25.0)
Fixed to skin by tumor (n = 10) (Fixation group)	5 (50.0)*
Sufficient resection margin (n = 10) (Margin group)	2 (20.0)
Gross involvement of skin by tumor (n = 17) (Invasion group)	16 (94.1) †
Total (n = 41)	24 (58.5)

* : one case of skin metastases was included.
 † : four cases of skin metastases were included.

17

(, invasion group).

10

7 (Table 1).

1 cm

3 cm

(subcutaneous tissue invasion)가

21

가

6)8)

5

(survival time)

(median survival time) Kaplan - Meier

가 23

18 가

가 4

가 10 41 (Table 2). 8

가 3 4

가 18 8

4 , 2 ,

1

41 24

(58.5%) (Table 1). 4

Table 2. Types of reconstruction after resection of the facial or neck skin during surgery for their head and neck cancers

	PC	STSG	LF	PMMC	FF
Biopsy group (n = 4)	4				
Fixation group (n = 10)	1	1	1	7	
Margin group (n = 10)	1	1	3	3	2
Invasion group (n = 17)	2	1		8	6
Total (n = 41)	8	3	4	18	8

n = Number of patients, PC : primary closure, STSG : split thickness skin graft, LF : local flap, PMMC : pectoralis major myocutaneous flap, FF : free flap

Table 3. Vital status according to the patterns of skin involvement

	NED	DOD	DOID	POD	AWD
Biopsy group (n = 4)	3 (1)				1 (0)
Fixation group (n = 10)	5 (2)	2 (2)	1 (0)	2 (1)	
Margin group (n = 10)	7 (0)	2 (2)			1 (0)
Invasion group (n = 17)	4 (3)	8 (8)	2 (2)	3 (3)	
Total (n = 41)	19 (6)	12 (12)	3 (2)	5 (4)	2 (0)

n = number of patients, () = number of skin involvement
 NED : no evidence of disease, DOD : die of disease
 DOID : die of intercurrent disease, POD : perioperative death
 AWD : alive with disease

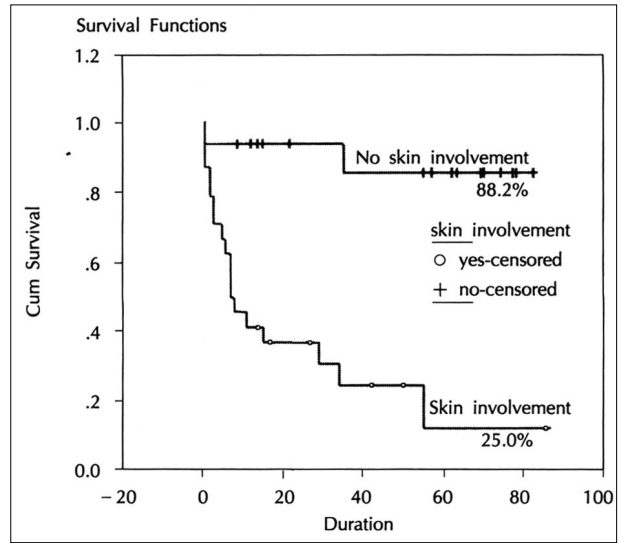
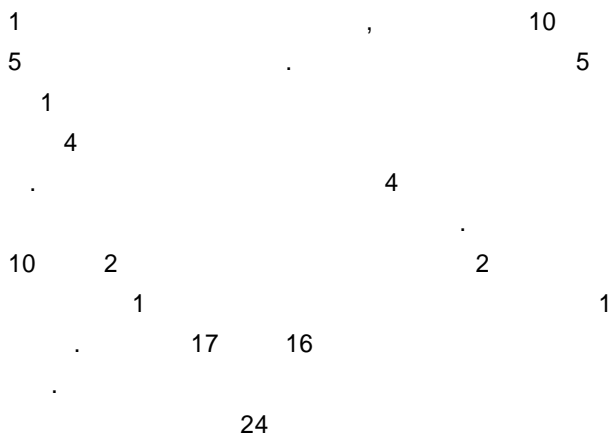


Fig. 1. Survival curve based on the existence or non-existence of skin involvement (n* = 41, 1990 - 1999, * : number of patients).

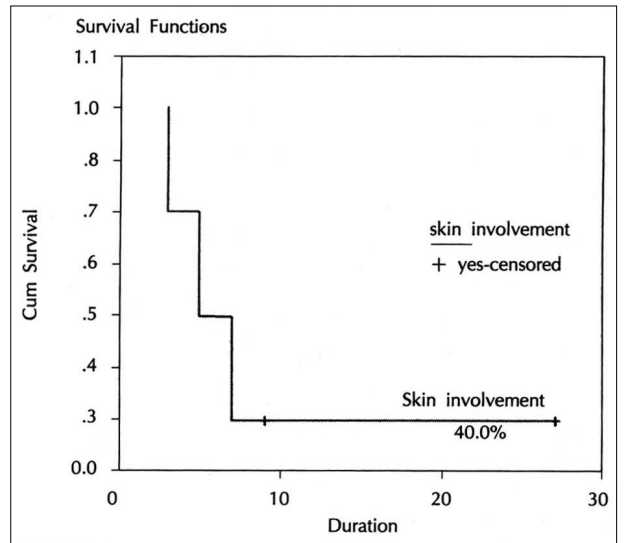


Fig. 2. Survival curve of head and neck cancer with skin metastases (n* = 5, 1990 - 1999, * : number of patients).

1
5
1
4
10
2
1
17
16
24
가 11
가 12
가 11
24
1
4
20
24
4 가
12 가
2
6 (25%)
(Table 3).
33
(mean su -

Survival time) 23
(median survival time) 11
가 1
3
(median survival time) 7
(Fig. 2).
1
17
1
2
(Table 3).
50
(median survival time) 23
(Fig. 1).
가 5
가 1
7
9 cm
13 (76.5%)
50

